



## Tanglewood Middle School

An International Baccalaureate World School

5215 San Felipe • Houston, Texas 77056

(713) 625-1411 • (713) 625-1415 fax

[www.HoustonISD.org/Tanglewood](http://www.HoustonISD.org/Tanglewood)

Facebook: @TanglewoodHISD • Twitter: @TanglewoodMS

Instagram: tanglewoodmsgators



### POLICIES AND CONTRACTS OF COMMUNITY RESPONSIBILITY

#### SIGNATURES OF ACKNOWLEDGEMENT

Your signature below (parent/guardian and student) indicates your review, understanding, and acknowledgement of all Tanglewood Middle School policies and contracts. *This page must be returned to your Advisory teacher with all signatures and requested information no later than August 26, 2022.*

In addition, the completed publication of the Houston ISD Code of Student Conduct, detailing specific administrative responses to student misconduct can be found on the Houston ISD website. You are required to review all aspects with your parent/guardian.

\_\_\_\_\_  
Student's Name (Printed)

\_\_\_\_\_  
Student's Signature of Acknowledgement

\_\_\_\_\_  
Grade

\_\_\_\_\_  
World (Sustainability or Innovation)

\_\_\_\_\_  
Parent /Guardian's Name (Printed)

\_\_\_\_\_  
Parent /Guardian's Signature of Acknowledgement

\_\_\_\_\_  
Daytime Phone

\_\_\_\_\_  
Emergency Phone

\_\_\_\_\_  
Dean's Name (Printed)

\_\_\_\_\_  
Advisory Teacher's Name (Printed)





## Tanglewood Middle School

An International Baccalaureate World School

5215 San Felipe • Houston, Texas 77056

(713) 625-1411 • (713) 625-1415 fax

www.HoustonISD.org/Tanglewood

Facebook: @TanglewoodHISD • Twitter: @TanglewoodMS

Instagram: tanglewoodmsgators



### STUDENT ASSIGNMENT BOOK & PLANNER

2022-2023

Student's Name: \_\_\_\_\_ Grade: \_\_\_\_\_ World: \_\_\_\_\_

Parent's Name: \_\_\_\_\_ Emergency Phone: \_\_\_\_\_

Dean of Students: \_\_\_\_\_ World: \_\_\_\_\_

	SUBJECT	ROOM	TEACHER
PERIOD A1			
PERIOD B2			
PERIOD A3			
PERIOD B4			
PERIOD A5			
PERIOD B6			
PERIOD A7			
PERIOD B8			
ADVISORY			
STUDY HALL/TUTORIAL			
ENRICHMENT			

#### Math STAAR

2022 Scale Score \_\_\_\_\_

Number of Items \_\_\_\_\_

2023 Scale Score Goal \_\_\_\_\_

Number of Items \_\_\_\_\_

#### Reading STAAR

2022 Scale Score \_\_\_\_\_

Number of Items \_\_\_\_\_

2023 Scale Score Goal \_\_\_\_\_

Number of Items \_\_\_\_\_

*It is the policy of the Houston Independent School District not to discriminate on the basis of age, color, handicap or disability, ancestry, national origin, marital status, race, religion, sex, veteran status, or political affiliation in its educational or employment programs and activities.*



## **Tanglewood Middle School**

**An International Baccalaureate World School**

5215 San Felipe • Houston, Texas 77056

(713) 625-1411 • (713) 625-1415 fax

[www.HoustonISD.org/Tanglewood](http://www.HoustonISD.org/Tanglewood)

**Facebook:** @TanglewoodHISD • **Twitter:** @TanglewoodMS



**ESTABLISHED:** 1929 – Henry W. Grady Elementary (on the corner of Westheimer and Post Oak)

1950 – Moved to its present location as an elementary school (until 1979)

1992 – Reopened as Henry W. Grady Middle School

2016 – Renamed Tanglewood Middle School

**MASCOT:** The Gator

**SCHOOL COLORS:** Royal Blue and Green

**MOTTO:** Educate • Innovate • Renew

### **MISSION STATEMENT**

In partnership with parents and community, Tanglewood Middle School provides a quality education by empowering individuals to become caring, self-sufficient, globally conscious citizens, who value innovation and sustainability as a lifelong process.

### **MESSAGE TO PARENTS**

Tanglewood Middle School is a safe learning environment for your child where he/she will be challenged daily. A quality education includes preparing students for life. These life skills include: resourcefulness, resilience, ambition, professionalism, and integrity. Resiliency can only be accomplished by taking risks, making mistakes, and learning from those mistakes. This is what middle school is about — testing life and your place in it. The transition from an elementary to middle school is difficult, due to the increased amount of responsibilities given to students, as well as the increased amount of life challenges for this age group.

“Learning is hard. True, learning is fun, exhilarating and gratifying — but it is also often daunting, exhausting and sometimes discouraging.... Our students need someone taking them seriously, believing in their abilities, and challenging them to improve themselves. We need to teach our children grit, curiosity, self-control, and optimism.” — *Paul Tough*

Tanglewood Middle School is an International Baccalaureate® (IB) Middle Years Programme (MYP) World School ([www.ibo.org/myp](http://www.ibo.org/myp)). Life in the 21<sup>st</sup> century places many changing demands on students making the transition through adolescence. They are at a crucial period of personal, social, physical and intellectual development, of uncertainty and of questioning. The MYP is designed to help them find a sense of belonging in the ever-changing and increasingly inter-related world around them, and to foster a positive attitude toward learning. The IB MYP is for students aged 11 to 16, and provides a framework of academic challenge and life skills that encourages students to embrace and understand the connections between traditional subjects and the real world, and become critical and reflective thinkers.

As an adult team, it is important that parents and teachers work together to support the growth of each child. While it is hard to allow mistakes and failures to happen, rescuing students does not give them the resiliency they must learn to be successful. Please pay close attention to the information in this planner, and support your child as he/she learns to adapt and grow.

Parental involvement is an integral part of the Tanglewood program. We are not just a school — *we are a community*. Parents are encouraged to work with their children at home, assist in after school activities, and to volunteer. Our PTO is an excellent way to become more involved. For more information, visit: <https://www.facebook.com/TanglewoodMiddleSchoolPTO>

## Bell Schedule

Breakfast 8:25 – 8:30am

Bell Rings to Begin the day 8:25am – **Students Tardy 8:30am**

Bell Rings to End the Day 4:00pm

Gator Day (Fridays)	6 <sup>th</sup> Grade	7 <sup>th</sup> Grade	8 <sup>th</sup> Grade
8:25 – 8:30am	<i>Report to A1/Breakfast</i>		
8:30 – 9:11 (41m)	1 <sup>st</sup> Period		
9:15 – 10:00am (45m)	Advisory/Leadership Team		
10:04 – 10:45 (41m)	2 <sup>nd</sup> Period		
10:49–11:30am (41m)	Lunch	3 <sup>rd</sup> Period	4 <sup>th</sup> Period
11:34 – 12:15 (41m)	3 <sup>rd</sup> Period	Lunch	4 <sup>th</sup> Period
12:19 – 1:00 (41m)	4 <sup>th</sup> Period	4 <sup>th</sup> Period	Lunch
1:04 – 1:45 (41m)	5 <sup>th</sup> Period		
1:49 – 2:30 (41m)	6 <sup>th</sup> Period		
2:34 – 3:15 (41m)	7 <sup>th</sup> Period		
3:19 – 4:00 (41m)	8 <sup>th</sup> Period		
4:00pm	<i>Dismissal</i>		

A/B Days (Mon – Thur)	A-Day	B-Day	A-Day	B-Day
8:25 – 8:30	<i>Report to A1/B2 Breakfast</i>			
8:30 – 9:58 (88m)	1 <sup>st</sup> Period	2 <sup>nd</sup> Period	1 <sup>st</sup> Period	2 <sup>nd</sup> Period
10:02 – 10:47 (45m)	Tutorial/Study Hall (A9)	Tutorial/ Study Hall (A9)	Tutorial/ Study Hall (A9)	Enrichment (B10)
10:51 – 12:56 (88m + 30m Lunch)	3 <sup>rd</sup> Period	4 <sup>th</sup> Period	3 <sup>rd</sup> Period	4 <sup>th</sup> Period
	10:51 – 11:21	First Lunch		
	11:35 – 12:05	Second Lunch		
	12:26 – 12:56	Third Lunch		
1:00 – 2:28 (88m)	5 <sup>th</sup> Period	6 <sup>th</sup> Period	5 <sup>th</sup> Period	6 <sup>th</sup> Period
2:32 – 4:00 (88m)	7 <sup>th</sup> Period	8 <sup>th</sup> Period	7 <sup>th</sup> Period	8 <sup>th</sup> Period
4:00pm	<i>Dismissal</i>			

Pep Rally/Assembly Schedule	
8:25 – 8:30	<i>Report to A7/B8 Breakfast</i>
8:30– 10:00am	7 <sup>th</sup> / 8 <sup>th</sup> Period
10:05 – 11:35am	5 <sup>th</sup> / 6 <sup>th</sup> Period
11:40 – 1:40pm	3 <sup>rd</sup> / 4 <sup>th</sup> Period
	11:40 – 12:10 First Lunch
	12:20 – 12:50 Second Lunch
	1:10 – 1:40 Third Lunch
1:45 – 3:15pm	1st / 2nd Period
3:15 – ?	Dismiss to Pep Rally
? – 4:00pm	Pep Rally
4:00pm	<i>Dismissal</i>

Midterm/Final	Day 1	Day 2	Day 3	Day 4
8:25 – 8:30	<i>Report to A1/B2 Breakfast</i>			
8:30 – 9:10 (40m)	Study Hall (A9)	Study Hall (A9)	Study Hall (A9)	Study Hall (A9)
9:15 – 11:25 (2 hours + 10m for instructions)	7 <sup>th</sup> Period	1 <sup>st</sup> Period	3 <sup>rd</sup> Period	5 <sup>th</sup> Period
11:30 – 2:10 (2 hours + 10m for instructions)	8 <sup>th</sup> Period	2 <sup>nd</sup> Period	4 <sup>th</sup> Period	6 <sup>th</sup> Period
	11:30 – 12:00	First Lunch		
	12:10 – 12:40	Second Lunch		
	12:50 – 1:20	Third Lunch		
2:15 – 3:05 (50m)	Study Session 1 1 <sup>st</sup> Period	Study Session 1 3 <sup>rd</sup> Period	Study Session 1 5 <sup>th</sup> Period	Enrichment (B14)
3:10 – 4:00 (50m)	Study Session 2 2 <sup>nd</sup> Period	Study Session 2 4 <sup>th</sup> Period	Study Session 2 6 <sup>th</sup> Period	Study Hall (A9)
4:00	<i>Dismissal</i>			

### STAAR Testing Days

	Day 1	Day 2	Day 3	Day 4
8:25 – 8:30	Report to Testing Room & Breakfast			
8:45am – 12:45pm	STAAR Testing			
12:45 -1:00pm	Announcements			
1:00 – 2:45	Assigned Period			
	1:00 – 1:30	First Lunch		
	1:35 – 2:05	Second Lunch		
	2:15 – 2:45	Third Lunch		
2:50 – 4:00 (m)	Assigned Period			
4:00	Dismissal			



## HANDBOOK AND PLANNER GUIDELINES FOR STUDENTS, PARENTS AND TEACHERS

### ***It is the STUDENT'S responsibility to:***

- Have the official Tanglewood Middle School Student Planner in *every class, every day*.
- Copy the agenda and homework assignment at the beginning of each class period. If there is no assignment, the student will write "None" in the space provided.
- Request Hall Passes for *personal emergencies only*. You must have your planner in order to request a Hall Pass.
- Consider using the planner for personal planning (club meetings, sporting events, parties, family events, etc.).
- Be sure that your parents see your planner *every evening* and initial *every weekend* indicating all pertinent school information for the week has been reviewed.

### ***It is the PARENT'S responsibility to:***

- Ask to see the planner *every evening*.
- Monitor homework assignments and their completion.
- Initial the planner at least *every weekend* so that the teacher knows the parent is up-to-date on the child's assignments.
- Send notes regarding absences on the day following the absence.
- Include your child in planning family events and recording them in the student's planner.

### ***It is the TEACHER'S responsibility to:***

- Use the planner as a means of communication with the parents, expecting a response from the parent.
- Have a clear, concise agenda and homework assignments *posted daily* for students to record in the planner.
- Have clear, concise expectations of special projects, including checkpoints and final due dates.
- Assist the student in appropriate use of Hall Passes, never allowing a student to leave the classroom without a pass.

## THE INTERNATIONAL BACCALAUREATE MIDDLE YEARS PROGRAMME

**IB MISSION STATEMENT:** The International Baccalaureate aims to develop inquiring, knowledgeable and caring young people who help to create a better and more peaceful world through intercultural understanding and respect. To this end, the organization works with schools, governments and international organizations to develop challenging programmes of international education and rigorous assessment. These programmes encourage students across the world to become active, compassionate and lifelong learners who understand that other people, with their differences, can also be right.

**WHAT IS AN IB EDUCATION?** An IB education is the result of a dynamic interaction between IB learners (who), teaching and learning in the IB (how), global contexts for teaching and learning (why) and the pursuit of significant knowledge and understanding (what). The IB's philosophy of education is informed by research and by over 40 years of practical experience in international education. This philosophy remains open to reflection and review; the IB has always championed a stance of critical engagement with challenging ideas, one that both values the past and remains open to innovation.

**THE IB LEARNER PROFILE:** At the center of international education in the IB are students with their own learning styles, strengths and limitations. Students come to school with combinations of unique and shared patterns of values, knowledge and experience of the world and their place in it. The learner profile is the IB's mission in action (*see chart on the opposite page*). These attributes of internationally minded people represent a broad range of human capacities and responsibilities that go beyond a concern for intellectual development and academic content. They imply a commitment to implement standards and practices that help all members of the school community learn to respect themselves, others, and the world around them.



**IB MYP CURRICULUM:** The IB MYP consists of eight subject groups:

- Arts
- Design
- Individuals and Societies
- Language Acquisition
- Language and Literature
- Mathematics
- Physical and Health Education
- Sciences

The community project/personal project appears at the center of the diagram. The emphasis is on the fluidity of the curricular framework and the interrelatedness of the subjects. Aspects of the areas of interaction are addressed naturally through the distinct disciplines. In particular, the framework is flexible enough to allow a school to include other subjects not determined by the IB, but which may be required by state or national authorities.



An IB education focuses on learners; develops effective approaches to teaching and learning; works within global contexts; and explores significant content. The aim of all IB programmes is to develop internationally minded people who, recognizing their common humanity and shared guardianship of the planet, help to create a better and more peaceful world.

*As IB learners we strive to be:*

- |                      |  |
|----------------------|--|
| <b>Inquirers</b>     | We nurture our curiosity, developing skills for inquiry and research. We know how to learn independently and with others. We learn with enthusiasm and sustain our love of learning throughout life.   |
| <b>Knowledgeable</b> | We develop and use conceptual understanding, exploring knowledge across a range of disciplines. We engage with issues and ideas that have local and global significance.   |
| <b>Thinkers</b>      | We use critical and creative thinking skills to analyze and take responsible action on complex problems. We exercise initiative in making reasoned, ethical decisions.   |
| <b>Communicators</b> | We express ourselves confidently and creatively in more than one language and in many ways. We collaborate effectively, listening carefully to the perspectives of other individuals and groups.   |
| <b>Principled</b>    | We act with integrity and honesty, with a strong sense of fairness and justice, and with respect for the dignity and rights of people everywhere. We take responsibility for our actions and their consequences.   |
| <b>Open-Minded</b>   | We critically appreciate our own cultures and personal histories, as well as the values and traditions of others. We seek and evaluate a range of points of view, and we are willing to grow from the experience.  |
| <b>Caring</b>        | We show empathy, compassion and respect. We have a commitment to service, and we act to make a positive difference in the lives of others and in the world around us.  |
| <b>Courageous</b>    | We approach uncertainty with forethought and determination; we work independently and cooperatively to explore new ideas and innovative strategies. We are resourceful and resilient in the face of challenges and change. <i>(Formerly Risk-Taker)</i>    |
| <b>Balanced</b>      | We understand the importance of balancing different aspects of our lives — intellectual, physical, and emotional — to achieve well-being for ourselves and others. We recognize our interdependence with other people and with the world in which we live. |
| <b>Reflective</b>    | We thoughtfully consider the world and our own ideas and experience. We work to understand our strengths and weaknesses in order to support our learning and personal development.   |

## FOR YOUR INFORMATION

**ABSENCES:** When a student is absent, the parent/guardian is to call the front desk (713-625-1411) before 9:30 AM and report the absence by giving the following: *student name, grade, and reason for absence*. Failure to give proper notification to the school may result in an absence being considered unexcused. Upon returning from an absence, a written excuse is required to be sent via email/by paper copy from the parent/guardian stating the reason for the absence to Ms. Cascarano / [daniela.cascarano@houstonisd.org](mailto:daniela.cascarano@houstonisd.org). Absences are excused for the student's personal illness, illness or death of an immediate family member, participation in legitimate school activities with the permission of the Principal, or emergency/extenuating circumstances as recognized by the Principal or Principal's designee. *Absences for Religious Holidays:* Parent should notify the attendance clerk and student's grade level leader/chairperson in writing prior to the student's observance of a religious holiday. These days will not affect the student's attendance record.

**ACADEMIC HONESTY POLICY FOR IB:** Cheating, plagiarism, and other forms of academic dishonesty will not be tolerated and will result in disciplinary consequences. Students at Tanglewood are guided to develop characteristics of IB learners, such as being *Principled* (a learner that acts with integrity and honesty). Additionally, being *Principled* means that students take responsibility for their own actions and the consequences that accompany them. Students found guilty of academic dishonesty will be required to redo the assignment, which will be subject to the school's grading policy (see page 20).

**ACTIVITIES (EXTRACURRICULAR):** School districts shall not schedule nor permit students to participate in any school-related activities on or off campus that would require, permit, or allow a student to be absent from class in any course more than 10 times during the 180-day instructional year, or five times during one semester. To participate in any extracurricular activity, a student must be passing all subjects as indicated by six-week performance reports.

**ARRIVAL / DISMISSAL:** Students are to report to the gym upon arrival and must remain in this area until the 8:25 AM bell. Students are not allowed to leave the campus for any reason after they have been dropped off by the parent or bus transportation. At arrival and dismissal, students are to be dropped off/picked up in front of the school in the carpool lanes only. Students are not to be dropped off/picked up in the front school parking area, bus zone in the back of the school, on San Felipe Street, on Sage Road, at the Bank of America parking lot, Randall's Shopping Center, or in the Del Monte Neighborhood. Students are not allowed in the park before or after school unless it is a school sponsored activity. Students are not allowed to leave campus prior to the first bell, or at dismissal and then return to campus without a parent/guardian. **Parents need to make arrangements for their children to arrive on campus after 8:05 AM and to be picked up by 4:00 PM.**

**ATHLETICS:** Participation in UIL athletic activities is subject to the "No Pass, No Play" restriction. These programs are open to all 7<sup>th</sup> and 8<sup>th</sup> grade students who wish to participate:

Football  
Swimming

Volleyball  
Track

Basketball  
Cross Country

Soccer  
Cheerleading

Baseball is offered as a club sport to all 6<sup>th</sup>, 7<sup>th</sup>, and 8<sup>th</sup> grade students.

**BACKPACKS / BOOK BAGS:** These items may be brought to school. Purses are not allowed. Students are responsible for their personal items. Students are not allowed to have rolling backpacks unless they have a doctors note.

**BICYCLES / SKATEBOARDS:** Bicycling and skateboarding to and from school is permitted, but students are not allowed to ride on school grounds. We have limited facilities for proper storage and security. All bicycles and skateboards must be locked in the rack located between the bus zone and the café each day. Tanglewood Middle School is not responsible for lost, stolen, or damaged bicycles or skateboards.

**CAMPUS SUPERVISION:** Assigned faculty supervise the arrival of students in the morning and the dispersal of students at dismissal. Faculty members have the authority to correct any student at any time on the Tanglewood campus. Students are not supervised prior to 8:05 AM or after 4:00 PM. **Parents need to make arrangements for their children to arrive on campus after 8:05 AM and to be picked up by 4:00 PM.**

**CELLULAR TELEPHONES:** Students are allowed to bring cellular telephones to school. Cellular telephone use is **expressly prohibited by students during instructional time.** Cell phones are to be powered off and placed in the student's backpack during the school day. Cellular telephones may only be used by students before and after school, and outside the building/campus perimeter. **Absolutely no cell phones on or out in the locker rooms.** Inappropriate use of cell phones will result in confiscation of the phone. The parent/guardian must make an appointment during the school day with their child's Dean to retrieve the cell phone. Per the Houston ISD Code of Student Conduct, there is \$15.00 fee to retrieve the phone after confiscation. **Tanglewood Middle School is not responsible for lost or stolen cell phones.**

**CHROMEBOOKS/VILS:** All students and parents or guardians are required to pay the \$25 non-refundable Loaner Fee, acknowledge, and sign the 2022-23 Loan Agreement and all required VILS paperwork prior to receiving the Chromebooks. **Payment can be made through [SchoolPay](#) or by paying cash.**

**CLUBS AND EXTRACURRICULAR ACTIVITIES:** Tanglewood supports a community of learners where students and adults participate in an enriching school environment during the day and after school. Clubs and after-school programs are practical ways to apply the academic, physical, social, and leadership skills so important to the middle school years. Offerings presently include (but are not limited to): Rotary Interact, National Junior Honor Society, Student Council, and Student Court.

**COMMUNITY ACTION AND SERVICE:** 6<sup>th</sup> and 7<sup>th</sup> grade students will be expected to attain a minimum hour requirement by April 2023. The community service hours will be assessed in the students' Advisory course every six weeks. Eighth grade students will be required to complete the *MYP Community Project* in their Advisory course in order to participate in 8<sup>th</sup> grade activities at the end of the school year.

**COMMUNICATION:** Communication within our school is of vital importance to the entire school community. Tanglewood hopes to improve communication within our school community by establishing a system for communication between parents, students, teachers, and administration.

***When the concern involves the classroom:***

1. The student should speak directly to the teacher, at an appropriate time, to discuss concerns. Appropriate times might include passing periods, or an appointment made before or after school, but should not interrupt classroom teaching and learning time. Concerns might also be offered in writing/email, and the teacher can arrange a conference with the student.
2. Students also have the option of speaking with their Advisory teacher/Dean of Students to gain perspective on the issue from another teacher's point-of-view, and to seek help with problems that can easily be handled at the school level.
3. If concerns continue, the student should speak with his/her parent to discuss the issue, gaining parental perspective of the problem and determining if the issue warrants further contact with the student's teacher.
4. Based on the discussion between parent and student, parents may elect to contact the teacher directly, either by phone, eMail, or by parent conference to discuss the concerns of the student and parent.
5. If a resolution of the issue is not possible, the parent's and the student's next step would be the student's Dean. Please call or make an appointment to see your child's Dean. Students may elect to see their Dean by themselves, or to bring their parents for a conference. These conferences may or may not include the teacher, as warranted by the issue.
6. If the Dean is not able to mediate a resolution to the issue, the parent may make an appointment to see the Principal of the school.

***When the concern involves school policy:***

1. The parent should call the student's Dean (Innovation World: Joseph Maldonado/ Sustainability World: Dominick Ivory) to verify or clarify the policy.
2. The parent may share, either verbally or in writing, concerns regarding the policy with the school's Principal.
3. If further action is desired, the parent may request that a discussion of the issue is placed on the agenda of the SDMC. Parents are welcome to attend all SDMC meetings, and to present their views to the committee.

**CONFERENCES:** Arrangements can be made for parent conferences with academic teams and Deans. These meetings must be prearranged. **We will not accept walk-in conferences.** A telephone message (713-625-1411) left at the front desk or eMailed to the teacher or grade level leader/chairperson will be returned no later than the following day, or the day after if the message was left after the teacher's conference period. These meetings will be held via TEAMS to respect our parents' travel time and teachers' planning.

**CRIMESTOPPERS:** Tanglewood participates in the Crimestoppers program. If you encounter anything that seems unlawful or suspicious, report it to an administrator, teacher or any staff member at the school. If you are uncomfortable reporting to a school staff member, you should call Crimestoppers at 713-222-TIPS (8477).

**CROSSWALKS:** Crosswalks are to be used at all times. It is against the law to cross in the middle of Sage Road or San Felipe Street. Tickets will be issued for not following the law.

**EARLY PICK-UP POLICY:** If you are picking up your child early from school on any day, please send a note to school with your child that morning. Please state in your note the reason your child will be leaving, and what time he/she will be picked up. Please have your child or yourself, deliver the note to the front desk before the first period that morning. Your child will be called out of class when you arrive to sign them out with your ID. Please be prepared — this procedure could take up to 15 minutes upon your arrival.

**\*\*We cannot permit a student to leave 45 minutes prior to the dismissal bell (3:15pm) on any day unless a written note has been brought in that morning and given to the front desk.**

**HALLWAYS:** Students are not permitted in the hallway during class time without a signed hall pass in the student planner. Should a student lose his/her planner, they will be required to purchase a replacement from their Dean's office for \$6.00. The hall pass area must include the *destination, time, and the teacher's signature*, and will be used only for the following reasons: *emergency* restroom use; library; front desk or Dean's office. Students may only use the hall passes in the planner assigned to them. There are to be no "stops" or "diversions" along the way. *Note:* All students must be on individual passes — *no group passes are permitted*. Students are allowed five (5) passes per week, and should budget their use accordingly.

**ID BADGES:** All students are required to wear their ID badge during the school day. The ID badge allows students to go to the front of the line during lunch, check out library books, etc. The student will be provided one ID badge and lanyard at no cost. The badge will be used for all years attending Tanglewood Middle School. If a student loses/damages the badge he/she will have to purchase a replacement for \$5.00. Students will return the badge and lanyard at the end of each school year for use for all 3 years at Tanglewood MS.

**IMMUNIZATIONS:** All students are required to have current and updated immunizations as required by law. It is the responsibility of the student and parent to provide the school with an accurate immunization record. A student may not attend school without documentation of state required immunizations. Exclusions from the compliance are allowable on an individual basis for medical and religious conflicts. Students falling into these categories must submit affidavits as specified by law.

**LOST AND FOUND:** Lost articles of clothing, valuables (jewelry, etc., and glasses are held in the Deans' offices. All personal articles need to be permanently marked with the owner's name. Students may look for lost items before or after school, during passing periods, and at lunchtime. Students may not leave the classroom to look for lost items. Articles not claimed after one week may be donated to a charitable organization.

**LUNCH:** Tanglewood **will not** accept deliveries of food from vendors for individuals or groups of students. This is a safety concern that also disrupts the educational process within the community. Parents can bring in their child's lunch if it was forgotten that day. The student will be expected to pick it up at the front desk. All students are provided free lunch and breakfast each day. Cookies and brownies are acceptable to celebrate birthdays, but should be approved by the administrator in charge of lunch. Parties at lunch are not approved.

**MAKE-UP WORK:** Students who are absent will be given an opportunity to make up work missed upon return to school. The number of days afforded to students for make-up work will be equal to the number of days absent. It is the student's responsibility to see that the work is made up. During an extended absence (3 days or more), work may be requested (with 48-hours notice from the student's teachers or Dean. For absences of one instructional cycle (2 days), it is recommended that students contact a classmate or teacher for information about the day's instruction and assignments.)

**MEDICATION AT SCHOOL:** Students bringing medication to school are to take it to the nurse in the clinic. Medications administered at school are to be maintained on campus by the school nurse for the treatment of chronic, long-term medical conditions.

**PERSONAL PROPERTY:** Portable audio equipment (hand-held games, iPods, cameras, large sums of money, and other such personal property, etc.) should not be brought to school. Many problems can arise, and the school cannot assume responsibility for them. If such personal property is brought to school and is being used during school hours (8:30 AM – 4:00 PM) it will be taken and held in the administrative office for the parent to pick up. **Tanglewood Middle School is not responsible for lost or stolen property.**

**REPORT CARDS / PROGRESS REPORTS:** All student grades are documented in HISD Connect by teachers. Alerts are placed in the electronic grade book for missing assignments. Parents and students are responsible for reviewing grades at least weekly. Grades are found on HISD Connect for parents & students shortly after the close of each grading period. At the mid-grading period point, a progress report with input from all teachers will be available in HISD Connect. See the monthly calendars for the dates of posting.

**SALES / FUNDRAISING:** The sale of any item for non-Tanglewood fundraisers must be approved in advance and in writing by the Principal. Selling and fundraising activities initiated by individual students are prohibited.

**SCHEDULE CHANGES:** Each student is to follow his/her schedule, even if obvious errors exist, until the schedule change process is completed and a new schedule generated. Students are to complete a *Request for Schedule Change* form and turn it in to their Dean's office. The Dean will make the change, or let the student know why the change cannot be made. No student is to leave the classroom to go to their Dean's office to request a schedule change. **Schedule change requests by the student or parent/guardian will only be reviewed during the first two weeks of the Fall semester. No schedule changes will occur after September 2, 2022.**

**SDMC:** The Shared Decision Making Committee is an advisory group of teachers, parents, school staff, administrators, and community members elected by their peers in the spring to serve for two years. The SDMC is chaired by the Principal. Decisions are made and school policy established based on school community needs and guidelines set by the Texas Education Agency (TEA) and the Houston Independent School District (HISD)

**STUDENT INCENTIVE PROGRAMS:**

- ***Honor Roll*** — Students with all “A’s” and up to two “B’s” will be recognized at the end of each six-week grading cycle.
- ***Gator Elite*** — Recognizes well-rounded, role model students at the end of each six-week grading cycle. Students must maintain an IB-3 (75) or above grade average in each class, have all “E’s” in conduct, and only one daily absence.
- ***Gallant Gator*** — Awarded to students who emulate Tanglewood and citizenship. Awarded yearly.
- ***Guardian Gator*** — Awarded at the end of each six-week grading cycle to students exemplifying IB Learner Profile and leadership traits.

**TELEPHONE USE:** We request that parents and students take care of personal business before they part company for the school day. The school telephones in the offices are for official school business only, not for the personal use of students. Emergency messages ONLY will be delivered to students during the instructional day. Students are not allowed to use the telephone during instructional time.

**TEXTBOOKS:** For each textbook/consumable workbook issued, students should write their name, their teacher's last name, and the semester and year issued in ink inside the front cover. Textbooks are the property of the State of Texas, and if lost, damaged, or stolen, must be paid for by the student to whom the book was assigned. 8<sup>th</sup> grade students with outstanding textbook fees will not be allowed to participate in the end of year activities.

**TRUANCY:** Also known as skipping school, truancy is a crime. It is a Class C misdemeanor for a minor child to be in a public place without the company of a parent or permission of the school during school hours [*Houston City Code 28-172(a)*]. Violation of this ordinance may result in criminal charges against the parent. A student absent from school without parental or school permission is truant. For more information, please refer to the Houston ISD Student Code of Conduct.

## **TANGLEWOOD MIDDLE SCHOOL POLICIES**

It is our belief that school pride is developed not only by attaining honor in scholastic accomplishments and extracurricular activities, but also by the way students maintain high standards of behavior, appearance, and grooming. The entire school community supports the individual student in the search for personal achievement and self-expression. The following policies provide and define a structure in which this search is possible and students are able to develop personal esteem that will enrich not only themselves but the entire school community.

**TANGLEWOOD CODE OF CONDUCT:** The goal of the Tanglewood Code of Conduct is to:

- Set the EXPECTATION that students will always be held accountable for the behavior they choose.
- Show students how to MONITOR their behavior.
- Give students practice in EVALUATING the behavior they choose on a moment-to-moment basis.

Tanglewood students are important members of the school and learning community. Membership is based on responsible behavior, cooperation, respectfulness and courtesy. *As a member of the Tanglewood community, each student must remember that:*

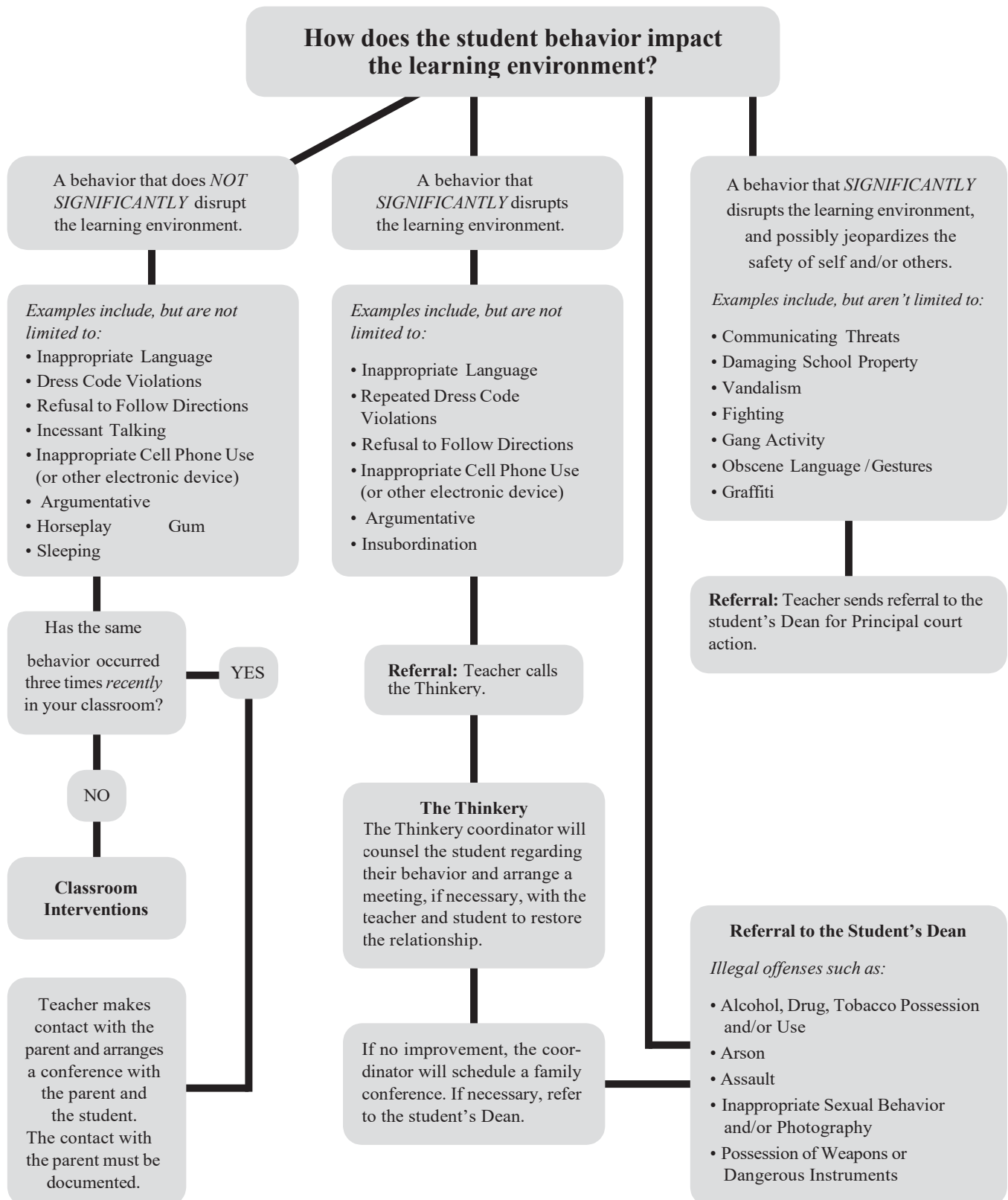
- I AM RESPONSIBLE for the learning expectations of my school and team.
- I CHOOSE the way I behave.
- I UNDERSTAND my appropriate behavior impacts positively on my learning community.
- I KNOW I am accountable for my chosen behaviors.

**TANGLEWOOD RESTORATIVE PRACTICE PROCESS:** At Tanglewood, we believe that every student deserves to be heard. We acknowledge that life can be challenging in middle school, and that sometimes our feelings get the best of us in certain situations. Our Restorative Practice Process is designed to give students the opportunity to reflect on their behavior choices, learn from their mistakes, and grow as members of the TMS community in a positive and productive way. This process helps improve communication between students and faculty, and creates opportunities to strengthen relationships. *The Tanglewood Restorative Practice Process consists of the following elements:*

- *Positive Parent/Guardian Communication* — Faculty and staff reach out for assistance in dealing with repeated behavior that disrupts the learning environment and/or process.
- *The Thinkery* — A one-on-one reflection time with a member of the TMS leadership team. The student is asked to objectively examine the situation; think about how they felt in the moment,



# Restorative Practice Process



explore the teacher's side of the situation and how they might have felt, etc. The student is then asked to reflect on their actions; identify alternative choices; connect their behavior to the IB Learner Profile traits, and how they could be used to improve the situation; and how the student can restore their relationship with their teacher.

- *Student Court* — In extreme cases, or when the *Thinkery* process fails to create meaningful change, students can be referred to a court of their peers overseen by the faculty advisor. Parents are notified in advance of the student's appearance, and they are assigned an advocate to represent them and their interests. Court members hear all sides of the situation, and recommend more advanced restorative practice solutions designed to help the student, such as one-on-one peer mentoring sessions.

## HOUSTON ISD CODE OF CONDUCT

Students are provided a copy of the Houston Independent School District's publication of student rights and responsibilities within the greater Houston community via the HISD website. It is the students' and parents' responsibility to be familiar with the information in the book. You are to review this information and sign and return the acknowledgement page. *Points of interest include:*

- HISD students have the right to a well-balanced curriculum and instruction.
- You have the right to attend public schools.
- You have the right to an evaluation of your academic progress.
- You have the responsibility to participate in the educational progress by attending class, paying close attention, completing assignments, and asking questions if you don't understand a subject you are being taught.
- You especially have the responsibility to behave with respect and courteousness; not interfering with the goals of the learning community.

School teachers and administrators have the right and responsibility to respond to student acts of misconduct that interfere with the goals of education. *The following information regarding student misconduct is provided in detail in the HISD Student Code of Conduct:*

<b>Level I</b>	These offenses generally occur in the classroom and can be corrected by the teacher.
<b>Level II</b>	These offenses are more serious than Level I and/or represent the student's inability to control Level I misconduct. Level II offenses can result in administrative intervention.
<b>Level III</b>	These offenses seriously disrupt the educational process in the classroom, the school, and/or school related activities, or are continuances of repeated Level I, II, or III misconduct. Level III misconduct may result in student suspension and optional removal to an alternative education program.
<b>Level IV</b>	Level IV misconduct involves more serious criminal offenses. This includes any felony, whether school related or not, unless it is one for which expulsion is required. This level of misconduct requires placement in an alternative education program.
<b>Level V</b>	Level V offenses are dealt with by the expulsion of the offending student. Expulsion is fit punishment for violations that seriously threaten the safety of the school community, such as criminal acts of mischief including, but not limited to, weapons possession, possession of illegal substances, and assault.

**TARDY POLICY:** This policy has been developed to emphasize the importance of each student being in class for the *entire period*, as well as arriving *on time* to school *every day*. During the first two weeks of school, teachers will work with students to help them get focused, organized, and to class *on time* (or early) *every day*. The Tardy Policy will be effective beginning September 6, 2022, and implemented consistently throughout the school year.

**CONSEQUENCES FOR ARRIVING LATE TO SCHOOL:** **The first class begins at 8:30 AM.** Beginning the school day promptly is important and demonstrates commitment to success. Tardiness to school will only be *excused* for doctor appointments, a late school bus, a court date, and reasons stated in the ABSENCES section of FOR YOUR INFORMATION. Oversleeping, car/traffic problems, etc. are all unexcused. Every time a student arrives late to school for unexcused reasons, he/she is required to report to their Dean's Office.

<b>First Four Tardies to School</b>	Note to student screen, review of policy, phone call home.
<b>Fifth Tardy to School</b>	Note to discipline record, review of policy, referral to the <i>Thinkery</i> .
<b>Successive Tardies to School</b>	Progression through the Tanglewood Restorative Practices Process will begin in accordance with the Houston ISD Code of Student Conduct.

**BUS RIDERS' RESPONSIBILITIES:** *As a bus rider at Tanglewood Middle School, I agree to:*

- Always be at my stop on time.
- Go directly to my bus after school.
- Be respectful to all members of the school staff on bus duty.
- Be courteous to the driver and other students.
- Approach the bus entrance only after the bus comes to a complete stop.
- Speak in a normal tone of voice.
- Sit in my assigned seat daily.
- Remain seated while bus is in motion.
- Keep all parts of my body as well as all objects inside the bus.
- Never engage in horseplay or fighting on the bus.
- Never tamper with the bus or its equipment.
- Keep the bus litter free (no food or beverages are to be consumed on the bus).
- Never attempt to ride another bus without prior approval.

If problem behavior occurs regarding bus riding, disciplinary action will be taken. The following disciplinary actions are from HISD's Administrative Procedures, 318.320. *Tanglewood Middle School administration will use the following disciplinary steps:*

<b>First Offense</b>	Give student warning. Notify parent.
<b>Second Offense</b>	2-3 day suspension from bus.
<b>Third Offense</b>	5-7 days suspension from bus.
<b>Fourth Offense</b>	Exclusion from riding the bus.

**IF INCIDENT IS SEVERE IN NATURE, STRONGER DISCIPLINARY ACTION WILL OCCUR.** HISD Transportation Services may utilize cameras to record student activity.

## DRESS CODE POLICY

*All students attending Tanglewood Middle School will be required to follow the Tanglewood Dress Code Policy. All articles of the uniform are to be maintained and worn in a way that represents the individual students and the school in a positive way. Students will be required to be in dress code for all "layers" of clothing. Students will be required to remove outerwear (hoodies, sweatshirts, heavy coats) to follow dress code policy at the beginning of the school day.*

*All clothing must be:*

- Solid colored, without variations or patterns.
- Clean, neat, mended — no rips, holes, cuts, etc., that extend through the fabric.
- Properly fitted. Clothing should be neither skin-tight nor excessively baggy.
- Without ornamentation (words, pictures, logos, etc.) other than official Tanglewood items.

*“Tops” (clothing above the waist)/outerwear:*

- *Colors for all kinds of tops:* **solid white or navy blue**. Please check with the school for a color sample if there is any question.
- *Fabrics:* Cotton or cotton blend.
- Must wear a **polo style shirt** or **oxford button-down shirt**, long- or short-sleeved with a collar. The shirt must be buttoned within one button of the top of the shirt.
- Tanglewood logos and any other logos one inch square (or smaller) will be permitted.
- Undershirts may be worn, and they may be visible (must be **white or navy blue**).
- Turtleneck and long-sleeved shirts (must be **white or navy blue**) may be worn under the uniform shirt.
- Any sweatshirt purchased in the school store and any official team or club sweatshirt may be worn.
- Other sweatshirts (fleece material) may be worn if they are crewneck or hooded and if they are **white or navy blue**. Hoods **must always be down** within the Tanglewood campus perimeter.

*“Bottoms” (clothing below the waist):*

- *Colors:* **solid Navy blue, khaki, or blue-jean blue**.
- *Fabrics:* Denim, twill, or corduroy.
- May be pants, skirts, shorts, skorts, capris, or jumpers.
- Must be **fitted at the waistline** (except jumpers).
- Sweatpants and leggings are not allowed.
- The shortest part must be at least as long as the **top of the kneecap**, so that when standing, the garment touches the kneecap. A slit in a skirt can be no higher than the kneecap. The hem cannot touch the floor when standing.

*Free Dress Days (same dress code, except):*

- May wear any colors.
- May have any ornamentation which is not disruptive or offensive.
- A polo or oxford shirt is not required, but a shirt with sleeves must be worn.
- Additional criteria may be announced for special days.

### ***Ceremonies:***

- Everyone should be dressed nicely and respectfully.
- Boys should wear dress pants and a dress shirt. Jackets and ties are optional.
- Girls may wear a dress, a skirt and blouse, or a nice pants outfit. Skirts should be long enough to touch the kneecap, and the top of any slit should be no higher than the knee. If the top is sleeveless, the shoulder straps should be **at least two inches wide at the narrowest point**. No midriffs or backs should be exposed. No spaghetti straps or strapless. No low-cut dresses or blouses will be allowed.
- Students should be well-groomed.
- No shorts or flip-flop type sandals are allowed for any students.
- Girls may wear make-up and high-heeled shoes.
- Students who do not conform to the dress code will be allowed to view the ceremony but **will not be allowed to participate**.

### ***Specific Rules of Dress and Grooming:***

- *Field Trips:* Free dress day attire is not permitted for students attending a field trip. Students must wear the regular dress code attire, even if the trip is on a free dress day.
- Shoes must be closed-in and have a rubber-like sole. The thickness of the heel and/or sole may not be more than one inch.
- Earrings may be worn if they are not larger than a quarter.
- When Tanglewood team uniforms are permitted to be worn during the school day, they must be worn in a way that meets dress code coverage guidelines — sleeves, length, etc.
- Coats that are not dress code colors may be worn to school on extremely cold days ( high temperature below 50 °F for the day). Hoodies/sweatshirts that **are not** navy blue or white are not allowed on cold days.
- No hats or head-covering other than those required by religious practice. Hoods must stay down while in the Tanglewood perimeter.
- No makeup is allowed.
- Jewelry is permissible, unless it is distracting or disruptive in the classroom. All acceptable neckwear (necklaces) must be tucked inside the uniform shirt.
- Small storage bags for supplies and necessary items may be brought into the classroom or placed in the backpack or book bag. Purses are not allowed.
- Exposed tattoos and/or use of pens or pencils to make marks on the skin or clothing are inappropriate for school and expressly prohibited.
- Personal grooming is restricted to restroom facilities.
- Students are required to wear the uniform dress to the campus and throughout the entire day until after leaving school. Changes in the restroom prior to leaving school are not allowed.

**Tanglewood administration reserves the right to determine if a student's dress is a disruption to the educational process. All such decisions are final.**

**PE UNIFORMS:** Uniforms will be available for purchase from the PE teachers or school store. Students must wear the official TMS PE uniform during PE classes. The PE uniform is **only** to be worn during PE class, and **not** throughout the school day. During cold weather, students may bring sweatpants to wear over their PE uniform.

**CONSEQUENCES FOR DRESS CODE VIOLATIONS:** Failure to comply with the uniform dress code will result in disciplinary action (a Level II infraction in the HISD Student Code of Conduct). *The consequences for not meeting the expectations are as follows:*

<b>First Offense</b>	Note to discipline record, review of policy, and phone contact with the parent. The parent will be required to bring appropriate garments.
<b>Second Offense</b>	Same as above, plus the student will follow the Tanglewood Restorative Practice Process.

**CAFETERIA MANAGEMENT PLAN:** Tanglewood students eat in the café/main commons. ***All other areas are off-limits during lunch.*** Students must present their ID Badge to proceed to the front of the lunch line. Students without an ID badge will have to wait until the line of students with ID badges has received their lunch. Students without an ID badge will not be allowed to go in the snack bar line or sit outside. Students are to remain seated in the café/main commons and raise their hand for permission to go to the restroom, get water, or go to the snack bar line. Parties are not allowed during lunch time. Upon completion of lunch, students will dispose of all trash in the trash receptacles. At lunch dismissal, administrators will dismiss rows to throw away trash and exit the café/main commons. Food and drinks are not allowed to be removed from the café/main commons.

### **ASSESSMENT (GRADING) POLICY**

**ASSESSMENT PHILOSOPHY:** The primary purpose of assessment is to support and encourage student learning. Each student assessment will reflect his/her progress towards, and mastery of district curriculum objectives and the development of IB Approaches To Learning (ATL) skills. Assessment criteria (graded assignments) in the IB MYP are designed, developed and applied by teachers working with students in their schools. The assessment model (use of rubrics) supports the professional judgment of the teacher in deciding the levels of achievement of individual students.

**RETEACHING/ INTERVENTION / REASSESSMENT:** Students who receive a failing grade on any assignment that counts toward the final IB achievement level will have an opportunity to receive re-teaching, and will be reassessed for mastery. It is the **student's responsibility** to initiate this process. Students will have three (3) school days to be reassessed for mastery. *Per secondary guidelines, "under no circumstance will a student be allowed to retake a final examination to improve his grade." Students will not be allowed to be reassessed on midterms and finals.*

**MAKE-UP WORK / LATE WORK:** Students are expected to complete all assignments that assess their mastery of district learning objectives. The teacher will mark "Inc" or "Msg" in HISD Connect if the work is received after the due date. A student may be assigned to attend a detention to complete the work. A student will have three (3) school days to complete the assignment, or re-do the assignment to show mastery of district objectives. Late work will be accepted up to three (3) school days after the due date, with a maximum score of IB-3 (75), but it will not be accepted after 4:00 PM on the third calendar day.

## **SPECIAL CODES IN GRADESPEED:**

<b>Inc (Incomplete)</b>	This indicates that the student was absent and did not turn in an assignment. The student will be expected to complete the assignment within the accepted timeframe for an absence.
<b>Msg (Missing)</b>	This indicates that the student was present and did not turn in an assignment. The student will be given three (3) school days to complete the assignment for a maximum score of IB-3 (75).
<b>Exc (Excused)</b>	This indicates that the teacher has excused an assignment, and that the grade will not be factored into the student's final IB achievement level.

**CONDUCT:** Academic grades will not reflect students' conduct. Teachers will use District pre-set comment codes on the progress report /report card to give feedback about conduct. Students may receive conduct cuts due to behaviors such as incorrect headings, consistently late assignments, inappropriate behavior, etc.

<b>E (Excellent)</b>	<i>Indicates that the student <u>always</u>:</i> <ul style="list-style-type: none"><li>• Is prepared for class</li><li>• Is respectful to teacher and peers</li><li>• Completes homework and turns it in on time</li></ul>
<b>S (Satisfactory)</b>	<i>Indicates that the student <u>consistently</u>:</i> <ul style="list-style-type: none"><li>• Is prepared for class</li><li>• Is respectful to teacher and peers</li><li>• Completes homework and turns it in on time</li></ul>
<b>P (Poor Quality)</b>	<i>Indicates that the student <u>sometimes</u>:</i> <ul style="list-style-type: none"><li>• Is prepared for class</li><li>• Is respectful to teacher and peers</li><li>• Completes homework and turns it in on time</li></ul>
<b>U (Unsatisfactory)</b>	<i>Indicates that the student <u>rarely</u>:</i> <ul style="list-style-type: none"><li>• Is prepared for class</li><li>• Is respectful to teacher and peers</li><li>• Completes homework and turns it in on time</li></ul>

**POSTING OF GRADES:** Assignments will be assessed and posted on HISD Connect in a timely manner so that students are receiving feedback and parents are able to access accurate information. Teachers will make every effort to assess and post the assignment grade within seven (7) school days from when the assignment was received, barring unforeseen circumstances.

**IB Rubric Score/Grading Scale**

<b>Letter</b>	<b>IB (HISD)</b>	<b>Description</b>
<b>A</b>	IB-8 (100) IB-7 (95) IB-6 (90)	A consistent and thorough understanding of the required knowledge and skills, and the ability to apply them almost faultlessly in a wide variety of situations. Consistent evidence of analysis, synthesis and evaluation is shown where appropriate. The student consistently demonstrates originality and insight, and always produces work of high quality.
<b>B</b>	IB-5 (85) IB-4 (80)	A consistent and thorough understanding of the required knowledge and skills, and the ability to apply them in a variety of situations. The student generally shows evidence of analysis, synthesis and evaluation where appropriate, and occasionally demonstrates originality and insight.
<b>C</b>	IB-3 (75)	A good general understanding of the required knowledge and skills, and the ability to apply them effectively in normal situations. There is occasional evidence of the skills of analysis, synthesis and evaluation.
<b>D</b>	IB-2 (70)	Limited achievement against most of the objectives, or clear difficulties in some areas. The student demonstrates a limited understanding of the required knowledge and skills, and is only able to apply them fully in normal situations with support.
<b>F</b>	IB-1 (65)	Minimal achievement in terms of the objectives. Based on teacher review of assessment. No demonstration of required knowledge and skills.

**A1**

Class: \_\_\_\_\_

1st

2nd

+ 3rd

---

3

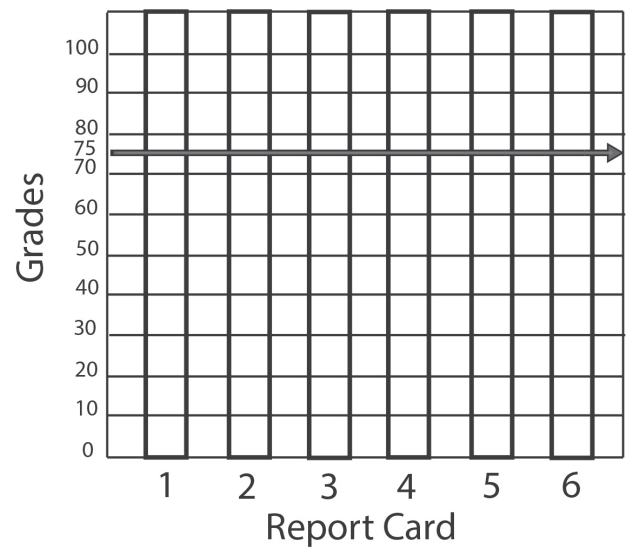
420

-

---

**A1**

Class: \_\_\_\_\_

**A3**

Class: \_\_\_\_\_

1st

2nd

+ 3rd

---

3

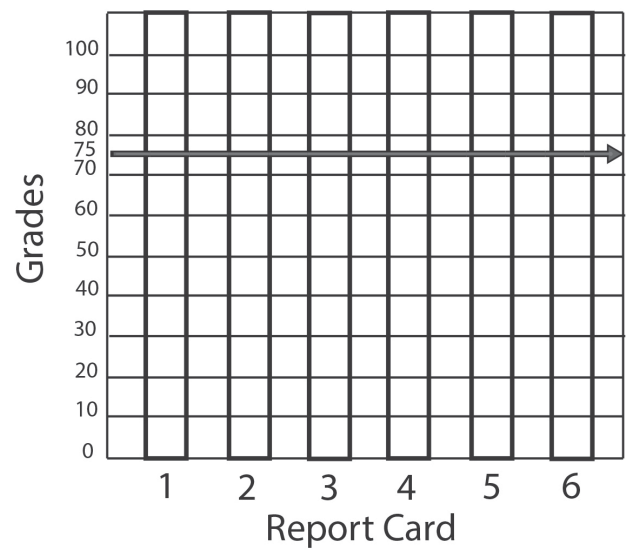
420

-

---

**A3**

Class: \_\_\_\_\_



**A5**

Class: \_\_\_\_\_

1st

2nd

+ 3rd

---

3

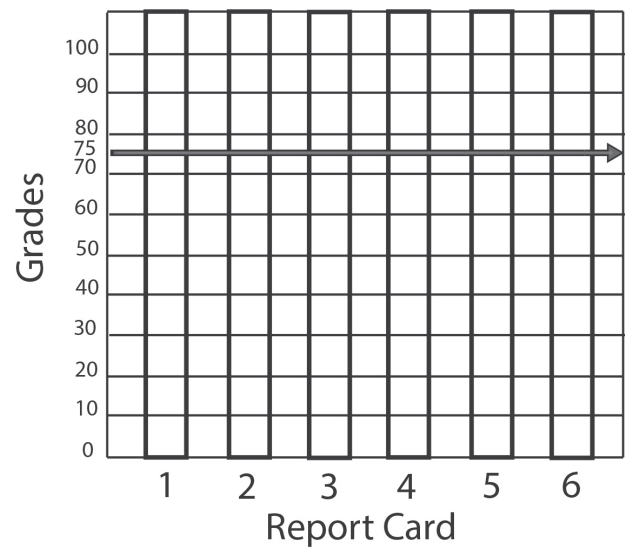
420

-

---

**A5**

Class: \_\_\_\_\_

**A7**

Class: \_\_\_\_\_

1st

2nd

+ 3rd

---

3

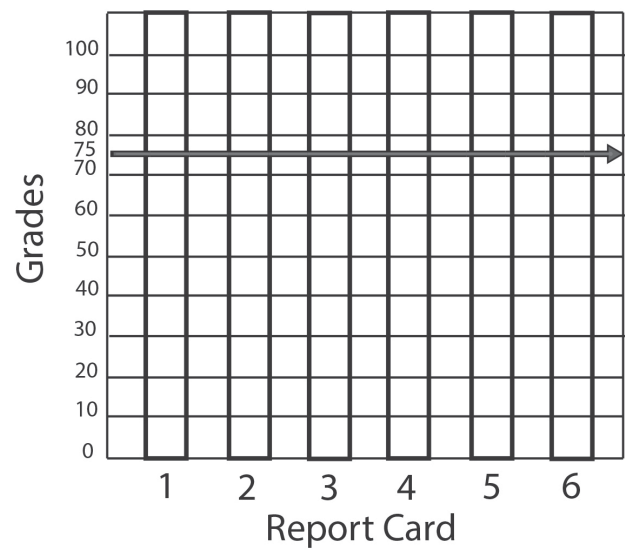
420

-

---

**A7**

Class: \_\_\_\_\_



**B2**

Class: \_\_\_\_\_

1st

2nd

+ 3rd

---

3

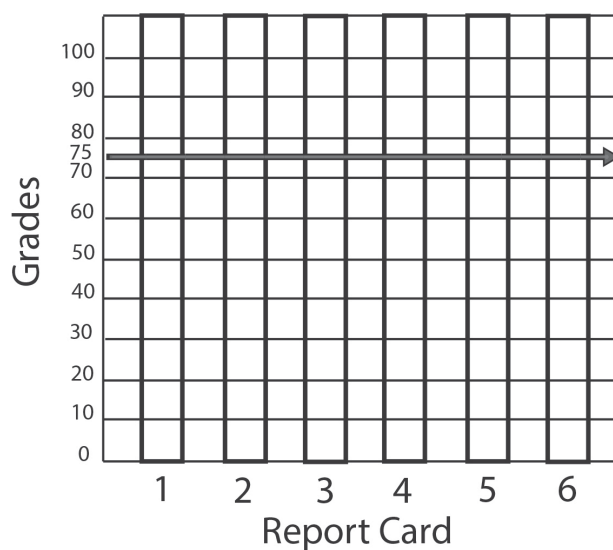
420

-

---

**B2**

Class: \_\_\_\_\_

**B4**

Class: \_\_\_\_\_

1st

2nd

+ 3rd

---

3

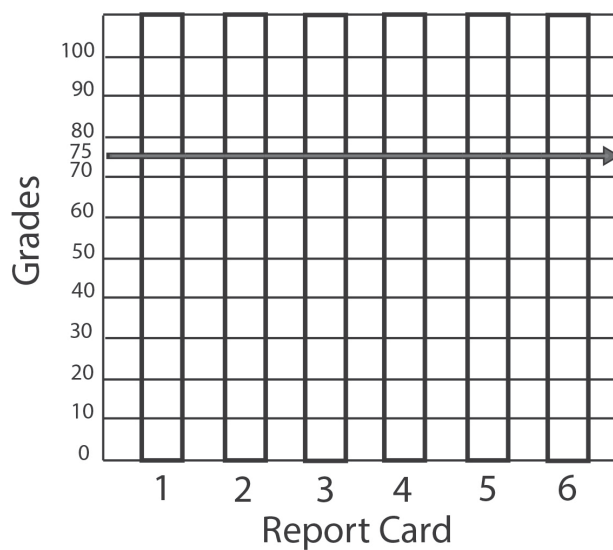
420

-

---

**B4**

Class: \_\_\_\_\_



**B6**

Class: \_\_\_\_\_

1st

2nd

+ 3rd

---

3

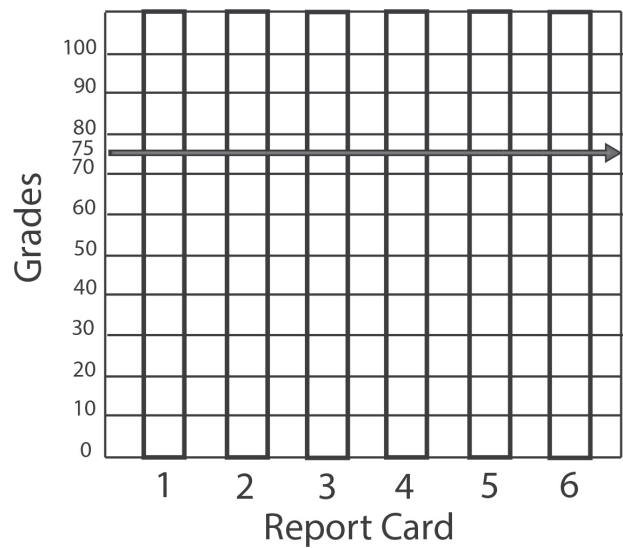
420

-

---

**B6**

Class: \_\_\_\_\_

**B8**

Class: \_\_\_\_\_

1st

2nd

+ 3rd

---

3

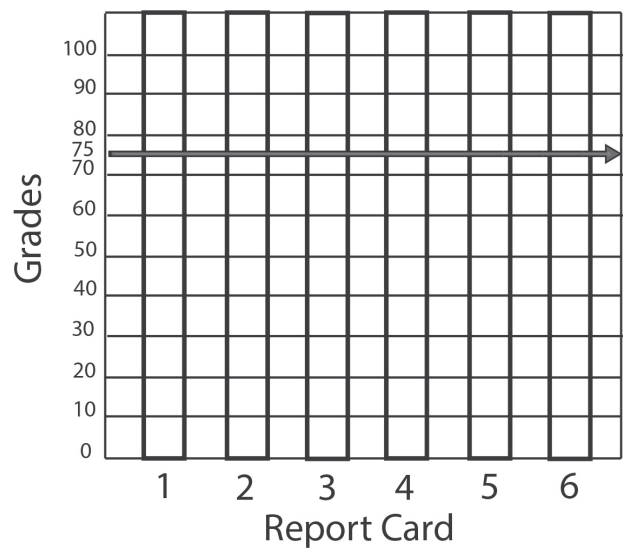
420

-

---

**B8**

Class: \_\_\_\_\_



# 2021

Wednesday

Thursday

Friday

Saturday

4

5

6

7

11

12

13

14

18

19

20

21

**F**

25

8:30 a.m. Advisory

**F**

26

8:30 a.m. Advisory

**F**

27

8:30 a.m. Advisory

28

*“Plan for the worst, hope for the best.” –  
Aidan Takeda*

**Sunday** August 22

---

---

**Monday** August 23

---

---

---

---

---

---

---

---

---

---

---

**Hall Pass**

**Tuesday** August 24

---

---

---

---

---

---

---

---

---

---

---

**Hall Pass**

# 2021

**Wednesday** August 25

**Hall Pass**

**Thursday** August 26

**Hall Pass**

**Friday** August 27

**Hall Pass**

**Saturday** September 28

# AUGUST / SEPTEMBER

*"Dear math , I am not a therapist  
solve your own problems, I am tired  
of solving them for you."  
–A. Whitney brown*

**Sunday** August 29

---

---

**Monday** August 30

---

---

---

---

---

---

---

---

---

---

**Hall Pass**

**Tuesday** August 31

---

---

---

---

---

---

---

---

---

---

**Hall Pass**

# 2021

**Wednesday** September 1

**Hall Pass**

**Thursday** September 2

**Hall Pass**

**Friday** September 3

**Hall Pass**

**Saturday** September 4

# SEPTEMBER

Sunday

# Monday

Tuesday

5

6

A

7

Holiday/No School

12

**A**

**13**

**B**

**14**

19

A

20

**B**

21

26

**A**

27

**B**

28

## KEY

**A** = Blue Day

**B** = Green Day

**G** = Gator Day

Wednesday	Thursday	Friday	Saturday
<div><div>A</div><div>1</div><div>6:00 p.m. Open House, Parent University &amp; Title I Meeting</div></div>	<div><div>B</div><div>2</div></div>	<div><div>G</div><div>3</div></div>	<div><div></div><div>4</div></div>
<div><div>B</div><div>8</div></div>	<div><div>A</div><div>9</div></div>	<div><div>B</div><div>10</div></div>	<div><div></div><div>11</div></div>
<div><div>G</div><div>15</div><div>9:15-10:00 a.m. 6<sup>th</sup> grade Bullying Presentation (V)</div></div>	<div><div></div><div>16</div><div>Holiday/No School</div></div>	<div><div></div><div>17</div><div>Teacher Service Day/ No School for Students</div></div>	<div><div></div><div>18</div></div>
<div><div>A</div><div>22</div></div>	<div><div>B</div><div>23</div></div>	<div><div>G</div><div>24</div></div>	<div><div></div><div>25</div></div>
<div><div>A</div><div>29</div></div>	<div><div>B</div><div>30</div></div>		

# SEPTEMBER

*“The best success is to live your  
life the way god wants you to” –  
Jose Altuve*

**Sunday** September 5

---

---

**Monday** September 6

---

---

---

---

---

---

---

---

---

---

**Hall Pass**

**Tuesday** September 7

---

---

---

---

---

---

---

---

---

---

**Hall Pass**

# 2021

**Wednesday** September 8

**Hall Pass**

**Thursday** September 9

**Hall Pass**

**Friday** September 10

**Hall Pass**

**Saturday** September 11

# SEPTEMBER

*Do your best till the very end, then no  
one can tell you that you never tried.  
– Aneeyah Gilmore*

**Sunday** September 12

---

---

**Monday** September 13

---

---

---

---

---

---

---

---

---

---

**Hall Pass**

**Tuesday** September 14

---

---

---

---

---

---

---

---

---

---

**Hall Pass**

# 2021

**Wednesday** September 15

**Hall Pass**

**Thursday** September 16

**Hall Pass**

**Friday** September 17

**Hall Pass**

**Saturday** September 18

# SEPTEMBER

*No matter how easy or hard the  
assignment is don't say I'll do it later.  
– Mehdi Bouthim*

**Sunday** September 19

---

---

**Monday** September 20

---

---

---

---

---

---

---

---

---

---

**Hall Pass**

**Tuesday** September 21

---

---

---

---

---

---

---

---

---

---

**Hall Pass**

# 2021

**Wednesday** September 22

**Hall Pass**

**Thursday** September 23

**Hall Pass**

**Friday** September 24

**Hall Pass**

**Saturday** September 25

# SEPTEMBER

*"School is a love and hate relationship  
but you'll feel great when it's all  
done so do well."  
– Blaine Rack*

**Sunday** September 26

---

---

**Monday** September 27

---

---

---

---

---

---

---

---

---

---

---

**Hall Pass**

**Tuesday** September 28

---

---

---

---

---

---

---

---

---

---

---

**Hall Pass**

# 2021

**Wednesday** September 29

**Hall Pass**

**Thursday** September 30

**Hall Pass**

**Friday** October 1

**Hall Pass**

**Saturday** October 2

# OCTOBER

# Sunday

# Monday

Tuesday

3

4

A

5

Teacher Service Day/  
No School for Students

## Cycle 2 Begins

10

A

**11**

**B**

12

17

A

18

**B**

19

24

A

25

**B**

26

31

## KEY

**A** = Blue Day

**B** = Green Day

**G** = Gator Day

# 2021

Wednesday	Thursday	Friday	Saturday
		<b>G</b> <u>1</u> Cycle 1 Ends	<u>2</u>
<b>B</b> <u>6</u>	<b>A</b> <u>7</u>	<b>B</b> <u>8</u> Report Card #1	<u>9</u>
<b>A</b> <u>13</u>	<b>B</b> <u>14</u>	<b>G</b> <u>15</u> 8th grade PSAT	<u>16</u>
<b>A</b> <u>20</u>	<b>B</b> <u>21</u>	<b>G</b> <u>22</u>	<u>23</u>
<b>A</b> <u>27</u>	<b>B</b> <u>28</u>	<b>G</b> <u>29</u>	<u>30</u>

OCTOBER

*“Make the most out of Middle School!  
You’ll regret it if you don’t.”  
– Levi Leon*

**Sunday** October 3

**Monday** October 4

**Hall Pass**

**Tuesday** October 5

**Hall Pass**

# 2021

**Wednesday** October 6

**Hall Pass**

**Thursday** October 7

**Hall Pass**

**Friday** October 8

**Hall Pass**

**Saturday** October 9

*“Work hard and suffer and rest  
like a champ in summer.”  
– Axel Nieto*

Sunday October 10

Monday October 11

Hall Pass

Tuesday October 12

Hall Pass

# 2021

**Wednesday** October 13

**Hall Pass**

**Thursday** October 14

**Hall Pass**

**Friday** October 15

**Hall Pass**

**Saturday** October 16

*“If it doesn’t challenge you,  
it doesn’t change you.”  
– Phoenix Sneed*

**Sunday** October 17

---

---

**Monday** October 18

---

---

---

---

---

---

---

---

---

---

---

**Hall Pass**

**Tuesday** October 19

---

---

---

---

---

---

---

---

---

---

---

**Hall Pass**

# 2021

**Wednesday** October 20

**Hall Pass**

**Thursday** October 21

**Hall Pass**

**Friday** October 22

**Hall Pass**

**Saturday** October 23

*“Don’t cry because it’s over.  
Smile because it happened”  
–Dr. Suess*

**Sunday** October 24

---

---

**Monday** October 25

---

---

---

---

---

---

---

---

---

---

---

**Hall Pass**

**Tuesday** October 26

---

---

---

---

---

---

---

---

---

---

---

**Hall Pass**

# 2021

**Wednesday** October 27

**Hall Pass**

**Thursday** October 28

**Hall Pass**

**Friday** October 29

**Hall Pass**

**Saturday** October 30

# NOVEMBER

# Sunday

# Monday

# Tuesday

A

1

B

# 2

7

A

8

**B**

9

14

**A**

15

**B**

16

### Cycle 3 Begins

21

22

23

Holiday/No School

Holiday/No School

28

**A**

29

B

30

## KEY

**A** = Blue Day

**B** = Green Day

**G** = Gator Day

# 2021

Wednesday	Thursday	Friday	Saturday
<b>A</b> <b>3</b>	<b>B</b> <b>4</b>	<b>G</b> <b>5</b>	<b>6</b>
<b>A</b> <b>10</b>	<b>B</b> <b>11</b> Veterans Day	<b>G</b> <b>12</b> Cycle 2 Ends	<b>13</b>
<b>A</b> <b>17</b>	<b>B</b> <b>18</b>	<b>G</b> <b>19</b> Report Card #2 Substitutes Day	<b>20</b>
<b>24</b> Holiday/No School	<b>25</b> Holiday/No School Thanksgiving	<b>26</b> Holiday/No School	<b>27</b>

# NOVEMBER

*“Those who take challenge as a sign of  
destruction will be destroyed, but those  
who take challenge to be a building  
block will grow.”  
– Sofia Serra*

**Sunday** October 31

---

---

**Monday** November 1

---

---

---

---

---

---

---

---

---

---

---

**Hall Pass**

**Tuesday** November 2

---

---

---

---

---

---

---

---

---

---

---

**Hall Pass**

# 2021

**Wednesday** November 3

**Hall Pass**

**Thursday** November 4

**Hall Pass**

**Friday** November 5

**Hall Pass**

**Saturday** November 6

# NOVEMBER

*“It’s how you deal with failure that determines how you achieve success.”*  
– Gesariah Burke

**Sunday** November 7

**Monday** November 8

**Hall Pass**

**Tuesday** November 9

**Hall Pass**

# 2021

**Wednesday** November 10

**Hall Pass**

**Thursday** November 11

**Hall Pass**

**Friday** November 12

**Hall Pass**

**Saturday** November 13

# NOVEMBER

*“Dont give up before you even try”  
– Trinity Kuissi*

**Sunday** November 14

---

---

**Monday** November 15

---

---

---

---

---

---

---

---

---

---

**Hall Pass**

**Tuesday** November 16

---

---

---

---

---

---

---

---

---

---

**Hall Pass**

# 2021

**Wednesday** November 17

**Hall Pass**

**Thursday** November 18

**Hall Pass**

**Friday** November 19

**Hall Pass**

**Saturday** November 20

# NOVEMBER

*There is no elevator to success.  
You will have to climb the stairs.  
– Zain Al Jumaily*

**Sunday** November 21

---

---

**Monday** November 22

---

---

---

---

---

---

---

---

---

---

---

**Hall Pass**

**Tuesday** November 23

---

---

---

---

---

---

---

---

---

---

---

**Hall Pass**

# 2021

**Wednesday** November 24

**Hall Pass**

**Thursday** November 25

**Hall Pass**

**Friday** November 26

**Hall Pass**

**Saturday** November 27

# NOVEMBER / DECEMBER

*"School is not going to teach you everything about life, you just have to learn it by going outside and experience it."*  
– Tejeshwar Jayaram

**Sunday** November 28

---

---

**Monday** November 29

---

---

---

---

---

---

---

---

---

---

**Hall Pass**

**Tuesday** November 30

---

---

---

---

---

---

---

---

---

---

**Hall Pass**

# 2021

**Wednesday** December 1

**Hall Pass**

**Thursday** December 2

**Hall Pass**

**Friday** December 3

**Hall Pass**

**Saturday** December 4

# DECEMBER

# Sunday

# Monday

# Tuesday

5

**A**

6

**B**

7

12

**A**

13

**B**

14

19

20

21

Winter Holiday/No School

Winter Holiday/No School

26

27

28

Winter Holiday/No School

Winter Holiday/No School

## KEY

**A** = Blue Day

**B** = Green Day

**G** = Gator Day

# 2021

Wednesday

Thursday

Friday

Saturday

**A** 1

**B** 2

**G** 3

4

**A** 8

**B** 9

**G** 10

11

**A** 15

**B** 16

**G** 17

18

22  
Winter Holiday/No School

23  
Winter Holiday/No School

24  
Winter Holiday/No School

25

29  
Winter Holiday/No School

30  
Winter Holiday/No School

31  
Winter Holiday/No School

# DECEMBER

*Do or do not. There is no try.  
The force will be with you. Always.  
– Maximiliano Guerra*

**Sunday** December 5

**Monday** December 6

**Hall Pass**

**Tuesday** December 7

**Hall Pass**

# 2021

**Wednesday** December 8

**Hall Pass**

**Thursday** December 9

**Hall Pass**

**Friday** December 10

**Hall Pass**

**Saturday** December 11

# DECEMBER

*“If you have a long or unique name, and the substitute hesitates, that’s how you know they’re tryna say your name.”*  
– Tejaswini Nadimpalli

**Sunday** December 12

---

---

**Monday** December 13

---

---

---

---

---

---

---

---

---

---

**Hall Pass**

**Tuesday** December 14

---

---

---

---

---

---

---

---

---

---

**Hall Pass**

# 2021

**Wednesday** December 15

**Hall Pass**

**Thursday** December 16

**Hall Pass**

**Friday** December 17

**Hall Pass**

**Saturday** December 18

# DECEMBER

*"1<sup>st</sup> never 2<sup>nd</sup>"*  
*–Mauricio Carranza*

**Sunday** December 19

---

---

**Monday** December 20

---

---

---

---

---

---

---

---

---

---

---

**Hall Pass**

**Tuesday** December 21

---

---

---

---

---

---

---

---

---

---

---

**Hall Pass**

# 2021

**Wednesday** December 22

**Hall Pass**

**Thursday** December 23

**Hall Pass**

**Friday** December 24

**Hall Pass**

**Saturday** December 25

# DECEMBER

*“Don’t make Coach O’Brien mad.”  
– Elisha Franklin*

**Sunday** December 26

---

---

**Monday** December 27

---

---

---

---

---

---

---

---

---

---

**Hall Pass**

**Tuesday** December 28

---

---

---

---

---

---

---

---

---

---

**Hall Pass**

# 2021

**Wednesday** December 29

**Hall Pass**

**Thursday** December 30

**Hall Pass**

**Friday** December 31

**Hall Pass**

**Saturday** January 1

# JANUARY

# Sunday

# Monday

Tuesday

2

**A**

3

**B**

4

## Return to School from Winter Break

9

G

10

F

11

Midterms (A7 & B8)

16

17

18

Holiday/ No School

Teacher Workday/  
No School for Students

23

**A**

24

**B**

25

**30**

A

31

## KEY

**A** = Blue Day

**B** = Green Day

**G** = Gator Day

Wednesday	Thursday	Friday	Saturday
			<u>1</u>
<u>A</u> 5	<u>B</u> 6	<u>G</u> 7	<u>8</u>
<u>F</u> 12 Midterms (A1 & B2)	<u>F</u> 13 Midterms (A3 & B4)	<u>F</u> 14 Midterms (A5 & B6)	<u>15</u>
<u>A</u> 19 Cycle 4 Begins 2 <sup>nd</sup> Semester Begins	<u>B</u> 20	<u>G</u> 21 Report Card #3	<u>22</u>
<u>A</u> 26	<u>B</u> 27	<u>G</u> 28	<u>29</u>

# JANUARY

*“Believe in yourself...If you  
quit you’ll fail.”  
– Trinity Booker*

**Sunday** January 2

---

---

**Monday** January 3

---

---

---

---

---

---

---

---

---

---

**Hall Pass**

**Tuesday** January 4

---

---

---

---

---

---

---

---

---

---

**Hall Pass**

# 2022

**Wednesday** January 5

**Hall Pass**

**Thursday** January 6

**Hall Pass**

**Friday** January 7

**Hall Pass**

**Saturday** January 8

# JANUARY

*"Make sure to do all your work!"  
– John McNeese*

**Sunday** January 9

---

---

**Monday** January 10

---

---

---

---

---

---

---

---

---

---

---

**Hall Pass**

**Tuesday** January 11

---

---

---

---

---

---

---

---

---

---

---

**Hall Pass**

# 2022

**Wednesday** January 12

**Hall Pass**

**Thursday** January 13

**Hall Pass**

**Friday** January 14

**Hall Pass**

**Saturday** January 15

# JANUARY

*"Believe in yourself, don't  
let anyone change that."  
– Adriano Vilanova*

**Sunday** January 16

---

---

**Monday** January 17

---

---

---

---

---

---

---

---

---

---

---

**Hall Pass**

**Tuesday** January 18

---

---

---

---

---

---

---

---

---

---

---

**Hall Pass**

# 2022

**Wednesday** January 19

**Hall Pass**

**Thursday** January 20

**Hall Pass**

**Friday** January 21

**Hall Pass**

**Saturday** January 22

*"I went to school during a pandemic,  
what's your excuse?"  
– Rachel Chaveste*

**Sunday** January 23

---

---

**Monday** January 24

---

---

---

---

---

---

---

---

---

---

**Hall Pass**

**Tuesday** January 25

---

---

---

---

---

---

---

---

---

---

**Hall Pass**

# 2022

**Wednesday** January 26

**Hall Pass**

**Thursday** January 27

**Hall Pass**

**Friday** January 28

**Hall Pass**

**Saturday** January 29

# JANUARY/FEBRUARY

*"Do as much things as you want, just don't get caught, Don't hold your emotions, they will eventually come out automatically at the wrong time , The Hero's Journey is real TRUST ME"*  
– Anny Campos

**Sunday** January 30

---

---

**Monday** January 31

---

---

---

---

---

---

---

---

---

---

---

**Hall Pass**

**Tuesday** February 1

---

---

---

---

---

---

---

---

---

---

---

**Hall Pass**

# 2022

**Wednesday** February 2

**Hall Pass**

**Thursday** February 3

**Hall Pass**

**Friday** February 4

**Hall Pass**

**Saturday** February 5

# FEBRUARY

# Sunday

# Monday

# Tuesday

**B**

# 1

6

A

7

**B**

8

National School  
Counselors Week

13

A

14

B

15

## Pink & Red Fundraiser STAAR Field Test Week

20

21

A

22

Teacher Service Day/  
No School for Students  
TELPAS Begins

**27**

**A**

28

### Cycle 5 Begins

## KEY

**A** = Blue Day

**B** = Green Day

**G** = Gator Day

Wednesday	Thursday	Friday	Saturday
<div><div>A</div><div>2</div></div>	<div><div>B</div><div>3</div></div>	<div><div>G</div><div>4</div></div>	<div><div></div><div>5</div></div>
<div><div>A</div><div>9</div></div>	<div><div>B</div><div>10</div></div>	<div><div>G</div><div>11</div></div>	<div><div></div><div>12</div></div>
<div><div>A</div><div>16</div></div>	<div><div>B</div><div>17</div></div> <div>Random Acts of Kindness Day</div>	<div><div>G</div><div>18</div></div>	<div><div></div><div>19</div></div>
<div><div>B</div><div>23</div></div>	<div><div>A</div><div>24</div></div>	<div><div>B</div><div>25</div></div> <div>Cycle 4 Ends</div>	<div><div></div><div>26</div></div>

# FEBRUARY

*"Middle school was one crazy ride."  
– Jack Maldonado*

**Sunday** February 6

---

---

**Monday** February 7

**Hall Pass**

**Tuesday** February 8

**Hall Pass**

# 2022

**Wednesday** February 9

**Hall Pass**

**Thursday** February 10

**Hall Pass**

**Friday** February 11

**Hall Pass**

**Saturday** February 12

# FEBRUARY

*“Act as if what you do makes  
a difference IT DOES”  
– Diego Cervantes*

**Sunday** February 13

---

---

**Monday** February 14

---

---

---

---

---

---

---

---

---

---

---

**Hall Pass**

**Tuesday** February 15

---

---

---

---

---

---

---

---

---

---

---

**Hall Pass**

# 2022

**Wednesday** February 16

**Hall Pass**

**Thursday** February 17

**Hall Pass**

**Friday** February 18

**Hall Pass**

**Saturday** February 19

# FEBRUARY

*“Try your best, and don’t give up. Always ask for help if you need it. You don’t need a lot of friends focus on yourself, and your mental health.”*  
– Saja Bani Shaban

**Sunday** February 20

---

---

**Monday** February 21

---

---

---

---

---

---

---

---

---

---

**Hall Pass**

**Tuesday** February 22

---

---

---

---

---

---

---

---

---

---

**Hall Pass**

# 2022

**Wednesday** February 23

**Hall Pass**

**Thursday** February 24

**Hall Pass**

**Friday** February 25

**Hall Pass**

**Saturday** February 26

# FEBRUARY/MARCH

*"Dream as if you'll live forever"*  
– Pablo Mendez

**Sunday** February 27

---

---

**Monday** February 28

---

---

---

---

---

---

---

---

---

---

---

**Hall Pass**

**Tuesday** March 1

---

---

---

---

---

---

---

---

---

---

---

**Hall Pass**

# 2022

**Wednesday** March 2

**Hall Pass**

**Thursday** March 3

**Hall Pass**

**Friday** March 4

**Hall Pass**

**Saturday** March 5

**A** = Blue Day  
**B** = Green Day  
**G** = Gator Day

**G** = Gator Day

Holiday/No School  
Chávez-Huerta Day

Wednesday	Thursday	Friday	Saturday
<div><div>A</div><div>2</div></div>	<div><div>B</div><div>3</div></div>	<div><div>G</div><div>4</div></div> <div>Report Card #4</div>	<div><div></div><div>5</div></div>
<div><div>A</div><div>9</div></div>	<div><div>B</div><div>10</div></div>	<div><div>G</div><div>11</div></div>	<div><div></div><div>12</div></div>
<div><div></div><div>16</div></div> <div>Spring Break/No School</div>	<div><div></div><div>17</div></div> <div>Spring Break/No School</div>	<div><div></div><div>18</div></div> <div>Spring Break/No School</div>	<div><div></div><div>19</div></div>
<div><div>A</div><div>23</div></div>	<div><div>B</div><div>24</div></div>	<div><div>G</div><div>25</div></div>	<div><div></div><div>26</div></div>
<div><div>B</div><div>30</div></div>	<div><div>A</div><div>31</div></div>		

*“Don’t limit yourself.”  
– Nicolas Luna*

**Sunday** March 6

**Monday** March 7

**Hall Pass**

**Tuesday** March 8

**Hall Pass**

# 2022

**Wednesday** March 9

**Hall Pass**

**Thursday** March 10

**Hall Pass**

**Friday** March 11

**Hall Pass**

**Saturday** March 12

*“When there is a lot to do, don’t stress about it do them slowly and take time. It really does help.”  
– Alex Peerbhai*

**Sunday** March 13

---



---

**Monday** March 14

---



---



---



---



---



---



---



---



---



---

**Hall Pass**

**Tuesday** March 15

---



---



---



---



---



---



---



---



---



---

**Hall Pass**

# 2022

**Wednesday** March 16

**Hall Pass**

**Thursday** March 17

**Hall Pass**

**Friday** March 18

**Hall Pass**

**Saturday** March 19

*"To whatever path I go"  
– Juleah Crawford*

**Sunday** March 20

---



---

**Monday** March 21

---



---



---



---



---



---



---



---



---



---

**Hall Pass**

**Tuesday** March 22

---



---



---



---



---



---



---



---



---



---

**Hall Pass**

# 2022

**Wednesday** March 23

**Hall Pass**

**Thursday** March 24

**Hall Pass**

**Friday** March 25

**Hall Pass**

**Saturday** March 26

*“Enjoy middle school while it lasts  
because you’ll miss it when it’s over.”  
– Cesar de la Cerda*

**Sunday** March 27

---



---

**Monday** March 28

---



---



---



---



---



---



---



---



---



---

**Hall Pass**

**Tuesday** March 29

---



---



---



---



---



---



---



---



---



---

**Hall Pass**

# 2022

**Wednesday** March 30

**Hall Pass**

**Thursday** March 31

**Hall Pass**

**Friday** April 1

**Hall Pass**

**Saturday** April 2

Tuesday

Tuesday

5

12

19

26

**A** = Blue Day  
**B** = Green Day  
**G** = Gator Day

Wednesday	Thursday	Friday	Saturday
		<div><div>B</div><div>1</div></div>	<div><div>2</div></div>
<div><div>A</div><div>6</div></div>	<div><div>B</div><div>7</div></div>	<div><div>G</div><div>8</div></div>	<div><div>9</div></div>
<div><div>A</div><div>13</div></div>	<div><div>B</div><div>14</div></div>	<div><div>15</div><div>Spring Holiday/No School</div></div>	<div><div>16</div></div>
<div><div>A</div><div>20</div></div>	<div><div>B</div><div>21</div></div>	<div><div>G</div><div>22</div><div>Cycle 5 Ends</div></div>	<div><div>23</div></div>
<div><div>A</div><div>27</div></div>	<div><div>B</div><div>28</div></div>	<div><div>G</div><div>29</div><div>Report Card #5</div></div>	<div><div>30</div></div>

*"Everyone wanna know what I'd do  
If I didn't graduate..I guess  
we'll never know."  
– Carlo Elias*

**Sunday** April 3

---

---

**Monday** April 4

---

---

---

---

---

---

---

---

---

---

**Hall Pass**

**Tuesday** April 5

---

---

---

---

---

---

---

---

---

---

**Hall Pass**

# 2022

**Wednesday** April 6

**Hall Pass**

**Thursday** April 7

**Hall Pass**

**Friday** April 8

**Hall Pass**

**Saturday** April 9

*"Take your time, have fun, live your life,  
because you only have one."  
– Zoe Love*

**Sunday April 10**

---



---

**Monday April 11**

---



---



---



---



---



---



---



---



---



---

**Hall Pass**

**Tuesday April 12**

---



---



---



---



---



---



---



---



---



---

**Hall Pass**

# 2022

**Wednesday** April 13

**Hall Pass**

**Thursday** April 14

**Hall Pass**

**Friday** April 15

**Hall Pass**

**Saturday** April 16

*“Take ALL of your classes seriously”  
– Khaalishah Sajogo*

**Sunday April 17**

---

---

**Monday April 18**

---

---

---

---

---

---

---

---

---

---

---

**Hall Pass**

**Tuesday April 19**

---

---

---

---

---

---

---

---

---

---

---

**Hall Pass**

# 2022

**Wednesday** April 20

**Hall Pass**

**Thursday** April 21

**Hall Pass**

**Friday** April 22

**Hall Pass**

**Saturday** April 23

*“Don’t leave things unfinished”  
– Rodrigo Vazquez Garcia*

**Sunday April 24**

---

---

**Monday April 25**

---

---

---

---

---

---

---

---

---

---

**Hall Pass**

**Tuesday April 26**

---

---

---

---

---

---

---

---

---

---

**Hall Pass**

# 2022

**Wednesday** April 27

**Hall Pass**

**Thursday** April 28

**Hall Pass**

**Friday** April 29

**Hall Pass**

**Saturday** April 30

**A** = Blue Day  
**B** = Green Day  
**G** = Gator Day

**G** = Gator Day

## Final Exams (A7 &amp; B8)

Wednesday		Thursday		Friday		Saturday	
<b>B</b>	<b>4</b>	<b>A</b>	<b>5</b>	<b>B</b>	<b>6</b>	<b>7</b>	
Algebra 1 EOC		STAAR 8 <sup>th</sup> grade Science		STAAR 8 <sup>th</sup> grade Social Studies School Lunch Hero Day			
<b>A</b>	<b>11</b>	<b>B</b>	<b>12</b>	<b>G</b>	<b>13</b>	<b>14</b>	
STAAR School Nurse Day		STAAR					
<b>A</b>	<b>18</b>	<b>B</b>	<b>19</b>	<b>G</b>	<b>20</b>	<b>21</b>	
<b>A</b>	<b>25</b>	<b>B</b>	<b>26</b>	<b>G</b>	<b>27</b>	<b>28</b>	

**MAY**

*“Don’t live someone else’s  
dream, find your own.”  
–Kimberly Gomez*

**Sunday May 1**

---

---

**Monday May 2**

---

---

---

---

---

---

---

---

---

---

**Hall Pass**

**Tuesday May 3**

---

---

---

---

---

---

---

---

---

---

**Hall Pass**

# 2022

**Wednesday** May 4

**Hall Pass**

**Thursday** May 5

**Hall Pass**

**Friday** May 6

**Hall Pass**

**Saturday** May 7

*"Always have a sharpened pencil ready."*  
*Diego Gonzalez*

**Sunday** May 8

---

---

**Monday** May 9

---

---

---

---

---

---

---

---

---

---

---

**Hall Pass**

**Tuesday** May 10

---

---

---

---

---

---

---

---

---

---

---

**Hall Pass**

# 2022

**Wednesday** May 11

**Hall Pass**

**Thursday** May 12

**Hall Pass**

**Friday** May 13

**Hall Pass**

**Saturday** May 14

*"I don't know what the heck is  
going on here, but I'll act like I do".  
– Alexis Alvarez*

**Sunday** May 15

---

---

**Monday** May 16

---

---

---

---

---

---

---

---

---

---

**Hall Pass**

**Tuesday** May 17

---

---

---

---

---

---

---

---

---

---

**Hall Pass**

# 2022

**Wednesday** May 18

**Hall Pass**

**Thursday** May 19

**Hall Pass**

**Friday** May 20

**Hall Pass**

**Saturday** May 21

*"Sometimes it's okay to be selfish,  
you matter too. Your no.1 priority  
should be your own health, success  
and happiness, not someone else's."  
– Yasmin Fakhriddinova*

**Sunday May 22**

---

---

**Monday May 23**

---

---

---

---

---

---

---

---

---

---

**Hall Pass**

**Tuesday May 24**

---

---

---

---

---

---

---

---

---

---

**Hall Pass**

# 2022

**Wednesday** May 25

**Hall Pass**

**Thursday** May 26

**Hall Pass**

**Friday** May 27

**Hall Pass**

**Saturday** May 28

*"You can take a break, but always  
be responsible of your time."  
– Angel Rosales*

**Sunday** May 29

---



---

**Monday** May 30

---



---



---



---



---



---



---



---



---



---

**Hall Pass**

**Tuesday** May 31

---



---



---



---



---



---



---



---



---



---

**Hall Pass**

# 2022

**Wednesday** June 1

**Hall Pass**

**Thursday** June 2

**Hall Pass**

**Friday** June 3

**Hall Pass**

**Saturday** June 4

**A** = Blue Day  
**B** = Green Day  
**G** = Gator Day

**G** = Gator Day

Tuesday

Last Day of School  
Report Card #6  
Gator Ball

14

21

28

Wednesday	Thursday	Friday	Saturday
<b>F</b> <u>1</u> Final Exams (A1 & B2)	<b>F</b> <u>2</u> Final Exams (A3 & B4)	<b>F</b> <u>3</u> Final Exams (A5 & B6) 8 <sup>th</sup> grade Gator Goodbye Walk	<u>4</u>
<u>8</u> Teacher Workday	<u>9</u>	<u>10</u>	<u>11</u>
<u>15</u>	<u>16</u>	<u>17</u>	<u>18</u>
<u>22</u>	<u>23</u>	<u>24</u>	<u>25</u>
<u>29</u>	<u>30</u>		



## MLA Style Guide Basics



### Plagiarism

**What is plagiarism?** If you have not given proper credit to your sources, you have committed plagiarism.

**Essentially, it is like you are lying to your reader. You have used someone else's ideas without telling your reader where you took it from.** Whether you have intentionally tried to pass off someone else's ideas as your own or, through careless research, you unintentionally "forgot" to cite a source, the charge is plagiarism. **Grady Middle School considers plagiarism as theft.**

**How can I avoid plagiarism?**

- Any idea or fact that you received from a source needs to be cited and quoted.
- Any idea or fact that is common knowledge does not need to be cited.
  - For example, facts like the earth rotates around the sun or Abraham Lincoln was assassinated while in office are common knowledge and would not have to be cited.
- Students will use **MLA** to format essays as well as to cite and quote works from other sources. This will decrease the likelihood of plagiarism.

### MLA Style

**What is MLA Style?** The Modern Language Association (MLA) developed a style guide for academic writing. This style guide deals with standardized ways to document the writer's source materials.

- MLA provides guidelines for the creation of a **bibliography (called a "Works Cited" page)** and the corresponding parenthetical (within the text) citation/quotation.

**Why is it Important that I cite Sources?**

As a writer, it is your **responsibility** to give proper credit to your sources. It is also very important that you give this credit in accordance with MLA style. **If you fail to give proper credit to a source, you have committed plagiarism. (See Academic Honesty).**

### Works Cited Page

**What is a "Works Cited" Page?** A "Works Cited" page is the name that MLA gives to a bibliography. It is a listing of all of the sources you cited in the body of your paper. Here are a few things to keep in mind about the "Works Cited" page:

1. The "Works Cited" page is always going to be the last page of your essay or report. You should type the words "Works Cited" and center it on the page.
2. Each entry must be complete and accurate.
3. Each entry reads like one long sentence. What this means is that it does not matter where the second line begins in an entry; it begins on the second line only because you ran out of room on the first line.
4. The second and subsequent lines are always indented five spaces.
5. The sources are listed alphabetically by the first word or name of the entry. This first word or name should be what you use in your parenthetical citation.



## Examples of Common Forms of Sources for Citation

**\*\*NOTE** - The details are important in these citations--the order of the information, punctuation, underlining and quote marks all must be exact.

### Print Resources (Viewed in Print Form)

**Book by One Author** Last Name, First Name. Title. Place of publication: Publisher, Copyright Date.

*Example:* Jameson, George P. Ellis Island. New York: Icon Press, 2006.

**Book by Two Authors** Last Name, First Name and First Name Last Name. Title. Place of publication: Publisher, Copyright Date.

*Example:* Smith, Henry G. and Betty Harmon. Freedom Rides. Chicago: Broad Shoulder Press, 2006.

**Encyclopedia** Last Name, First Name. "Title of Article." Name of Encyclopedia. Edition Year.

(NOTE: The author is usually listed at the end of the article. If an author is not listed, begin the entry with the title of the article.)

*Example:* Franz, Charlene. "Goat." World Book. 2006 ed.

**A Work within an Anthology** Last Name, First Name. "Title of work." Title of Anthology. Editor's First Name Last Name. Place of Publication: Publisher, Copyright Date. Page numbers.

*Example:* Stevens, Wallace. "Sunday Morning." Modern American Poetry. Ed. Thomas J. Hines. New York: Holt, Rinehart and Winston, 2003. 20-22.

**Newspaper Article** Last Name, First Name. "Title of Article." Newspaper Name Date: page(s).

*Example:* Blake, Terry. "Attack in Bagdad: Two Marines Dead." The Plain Dealer 20 July 2006: A1.

**Magazine Article** Last Name, First Name. "Title of Article." Title of Magazine Date: page numbers.

*Example:* Thomasson, Ronald. "Salt Mines of Lake Erie." Cleveland Magazine 15 May 2004: 23-25.

### Non-Print Resources (Viewed Electronically)

**Online Database-Encyclopedia** "Title of Article." Name of Encyclopedia. Year. Name of online source. Date <URL (Persistent link)>.

*Example:* "Whale Oil." Encyclopedia Britannica. 2006. Encyclopedia Britannica Online. 23 August 2006  
<<http://search.eb.com/eb/article-9076727>>.

**Internet Website** Last Name, First Name. Title of Website. Date last updated. Author (if given). Name of organization that sponsors the site. Date accessed <URL link>.

*Example:* Walker, Gary. "The Effects of Radiation." Hiroshima Atom Bomb. 15 Mar. 2000. Los Alamos Research Facility. 14 Oct. 2008. <http://www.larf.org/hiro/radefect.htm>

**Video Documentary** Title of Film. Director's First Name Last Name. Copyright Year. Medium. Production Company Name. Edition Date.

*Example:* Finding Harmony. Kent Williams. 2003. DVD. Zen Buddhist Lecture Series Video. 2003.

**TV/ Radio Transcript** "Title of TV/ Radio episode or segment." Title of Program. Broadcast date. Transcript. Name of Database Used. Date accessed <URL link>.

*Example:* "Special Edition: The War in Iraq Part II." CNN Special Report. 5 April 2003. Transcript. elibrary. 27 March 2006.  
<<http://elibrary.bigchalk.com>>.

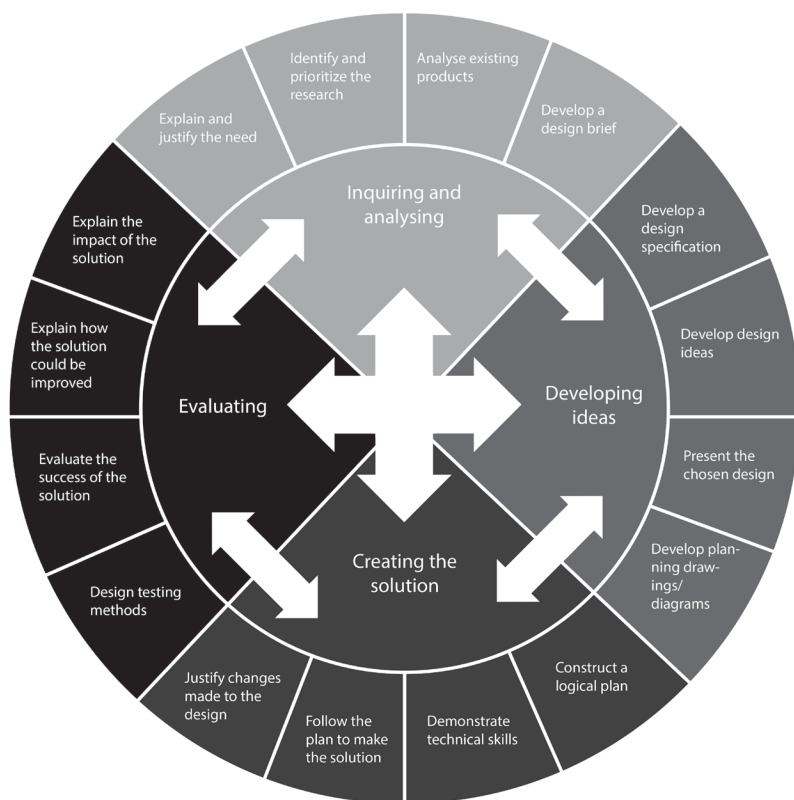


# MATHEMATICS REFERENCE MATERIAL

LENGTH	PERIMETER & CIRCUMFERENCE
<p>CUSTOMARY</p> <p>1 mile (mi) = 1,760 yards (yd)</p> <p>1 yard (yd) = 3 feet (ft)</p> <p>1 foot (ft) = 12 inches (in)</p> <p>METRIC</p> <p>1 kilometer (km) = 1,000 meters (m)</p> <p>1 meter (m) = 100 centimeters (cm)</p> <p>1 centimeter (cm) = 10 millimeters (mm)</p>	<p>Square <math>P = 4s</math></p> <p>Rectangle <math>P = 2f + 2w</math> or <math>P = 2(f + w)</math></p> <p>Circle <math>C = 2\pi r</math> or <math>C = \pi d</math></p>
VOLUME & CAPACITY	AREA
<p>CUSTOMARY</p> <p>1 gallon (gal) = 4 quarts (qt)</p> <p>1 quart (qt) = 2 pints (pt)</p> <p>1 pint (pt) = 2 cups (c)</p> <p>1 cup (c) = 8 fluid ounces (fl oz)</p> <p>METRIC</p> <p>1 liter (L) = 1,000 milliliters (ml)</p>	<p>Square <math>A = s^2</math></p> <p>Rectangle <math>A = lw</math> or <math>A = bh</math></p> <p>Parallelogram <math>A = bh</math></p> <p>Triangle <math>A = \frac{1}{2}bh</math></p> <p>Trapezoid <math>A = \frac{1}{2}(b_1 + b_2)h</math></p> <p>Circle <math>A = \pi r^2</math></p>
WEIGHT & MASS	SURFACE AREA
<p>CUSTOMARY</p> <p>1 ton (T) = 2,000 pounds (lb)</p> <p>1 pound (lb) = 16 ounces (oz)</p> <p>METRIC</p> <p>1 kilogram (kg) = 1,000 grams (g)</p> <p>1 gram (g) = 1,000 milligrams</p>	<p>TOTAL SURFACE AREA</p> <p>Prism <math>S = Ph + 2B</math></p> <p>Cylinder <math>S = 2\pi rh + 2\pi r^2</math></p> <p>Pyramid <math>S = \frac{1}{2}Pl + B</math></p> <p>LATERAL SURFACE AREA</p> <p>Prism <math>S = Ph</math></p> <p>Cylinder <math>S = 2\pi rh</math></p> <p>Pyramid <math>S = \frac{1}{2}Pl</math></p>
TIME	VOLUME
<p>1 year = 12 months</p> <p>1 year = 52 weeks</p> <p>1 week = 7 days</p> <p>1 day = 24 hours</p> <p>1 hour = 60 minutes</p> <p>1 minute = 60 seconds</p>	<p>Rectangular Prism <math>V = lwh</math> or <math>V = Bh</math></p> <p>Prism <math>V = Bh</math></p> <p>Cylinder <math>V = \pi r^2 h</math> or <math>V = Bh</math></p> <p>Pyramid &amp; Cone <math>V = \frac{1}{3}Bh</math></p> <p>Sphere <math>V = \frac{4}{3}\pi r^3</math></p>
	PYTHAGOREAN THEOREM
	$a^2 + b^2 = c^2$

## MULTIPLICATION CHART

x	1	2	3	4	5	6	7	8	9	10	11	12	13	14	15	16	17	18	19	20
1	1	2	3	4	5	6	7	8	9	10	11	12	13	14	15	16	17	18	19	20
2	2	4	6	8	10	12	14	16	18	20	22	24	26	28	30	32	34	36	38	40
3	3	6	9	12	15	18	21	24	27	30	33	36	39	42	45	48	51	54	57	60
4	4	8	12	16	20	24	28	32	36	40	44	48	52	56	60	64	68	72	76	80
5	5	10	15	20	25	30	35	40	45	50	55	60	65	70	75	80	85	90	95	100
6	6	12	18	24	30	36	42	48	54	60	66	72	78	84	90	96	102	108	114	120
7	7	14	21	28	35	42	49	56	63	70	77	84	91	98	105	112	119	126	133	140
8	8	16	24	32	40	48	56	64	72	80	88	96	104	112	120	128	136	144	152	160
9	9	18	27	36	45	54	63	72	81	90	99	108	117	126	135	144	153	162	171	180
10	10	20	30	40	50	60	70	80	90	100	110	120	130	140	150	160	170	180	190	200
11	11	22	33	44	55	66	77	88	99	110	121	132	143	154	165	176	187	198	209	220
12	12	24	36	48	60	72	84	96	108	120	132	144	156	168	180	192	204	216	228	240
13	13	26	39	52	65	78	91	104	117	130	143	156	169	182	195	208	221	234	247	260
14	14	28	42	56	70	84	98	112	126	140	154	168	182	196	210	224	238	252	266	280
15	15	30	45	60	75	90	105	120	135	150	165	180	195	210	225	240	255	270	285	300
16	16	32	48	64	80	96	112	128	144	160	176	192	208	224	240	256	272	288	304	320
17	17	34	51	68	85	102	119	136	153	170	187	204	221	238	255	272	289	306	323	340
18	18	36	54	72	90	108	126	144	162	180	198	216	234	252	270	288	306	324	342	360
19	19	38	57	76	95	114	133	152	171	190	209	228	247	266	285	304	323	342	361	380
20	20	40	60	80	100	120	140	160	180	200	220	240	260	280	300	320	340	360	380	400



## THE MYP DESIGN CYCLE

The design cycle model shown at left represents the MYP design methodology of how to develop products and/or solve problems, and underpins the entire design process. Every designer may approach a problem in a different way. Depending on their specialization, designers tend to have their own methodology, but some general activities are common to all designers.

The process is divided into four stages: *Inquiring and Analyzing*; *Developing Ideas*; *Creating the Solution*; and *Evaluating*. This incremental process allows the designer to go from identifying a design opportunity to the testing and evaluation of a solution. This process leads to the creation of solutions that solve a problem.

# STAAR GRADE 8 SCIENCE REFERENCE MATERIALS



## FORMULAS

$$\text{Density} = \frac{\text{mass}}{\text{volume}}$$

$$D = \frac{m}{V}$$

$$\text{Average speed} = \frac{\text{total distance}}{\text{total time}}$$

$$s = \frac{d}{t}$$

$$\text{Net force} = (\text{mass})(\text{acceleration})$$

$$F = ma$$

$$\text{Work} = (\text{force})(\text{distance})$$

$$W = Fd$$



## Tanglewood MS Department of Social Studies

## Literacy in the Middle Process Skills

### Purposeful Talk

Each member contributes  
Each member responds

Can you tell me more?  
Can you give me an example?

This reminds me of \_\_\_\_\_ because \_\_\_\_\_

Why do you think that? Example?

I agree with \_\_\_\_\_ because \_\_\_\_\_.

I disagree with \_\_\_\_\_ because \_\_\_\_\_  
I respect your ideas but \_\_\_\_\_

### Writing a Thesis Statement

A thesis statement is the foundation for a debatable position.

**Claim + Reason = Thesis**

- I. Make an assertion.
- II. Provide a reason.

Example:

*v{tLs ttI,xatLoV\, -poLLcLes a e..- t e  
F..eaM aV\,d ""c<La wcw we..-e ft1L..-  
because t e wa..- Le ..-LtcilV\., wLt ci  
Lci..-ge debt.*

### Writing History - ABC Format

**Answer** - Make an assertion. Write a thesis statement.

**Back it up** - Provide supporting evidence. 2-3 examples.

**Commentary** - Significance. So what?

- *As a result of...*
- *Because of...*
- *Due to...*

Example:

*ir t svi ta,x:at ovvpOL c es a eir tvie FireV\,CVI t:1111,cl f111,clt1 Wair  
we..-e fa ..- because tvie wa..- Le ..- ta III, 111, clebt. Fo..-  
e,x:avwpLe, poL c s such as tvie stt1V1,1,p, Tea t1111,cl  
Tow111,svie111,cl Acts we..-e cles g cl to..-a se ..-eve111,ue fo..-tvie  
... t SVI CYOWV\, Due to the fr:ict twir;it l't.tr;l. 1/1, V\,CUYYecl r,,  
clebt fy-011\,I, the Fy-e111,cvi ilV\,cl 1111,clt:1111, WitY- twas coV\,1,-pLeteL:1  
fa[y]-to ta,x:the c0Lo111,[es to vieL-p y-a[se V\,eeeclecl Y-eveV\,ue.*

### Annotation

Annotation is the process of interacting with a written text to better comprehend, analyze and evaluate the material. It is a personal conversation with the text.

Develop your own **Annotation Code** for:

- **Key points, concepts, ideas** = Underline

**Dates** = Circle

**People** = Draw a box

**Places** = Capital P, circle it

- **Questions** = Question mark

- **Quotes** = Brackets [" "]

- **Write** thoughts off to the side or below

### QSSSA

**Q (Question):** Asks a question.

**S (Signal):** The students give the teacher a response when they are ready to answer.

**S (Stem):** Sentence stem to frame structure language.

**S (Share):** Students are asked to share their responses with one or more peers.

**A (Assess):** Assesses the quality of discussion by selecting a few students to share their answers with the class.

### Verbal Response Rubric

#### 18 Score

#### Score 8 - Strong Academic Language and Understanding

Shows powerful evidence, higher order thinking skills.  
Concepts are accurate and well supported.  
The response is comprehensive.

#### Score 6 - Moderate Academic Language and Understanding

Some evidence of higher order thinking skills.  
Concepts are accurate and supported.  
The response may not develop all parts equally.

#### Score 4 - Some Academic Language and Understanding

The response includes some basic ideas.  
The response provides little or no support.

#### Score 2 - Little Academic Language and Understanding

The response includes incomplete or fragmented ideas or knowledge.

